



# POAH Passive House Projects

1. Why?
2. How?
3. What?

# WHERE WE ARE



Connecticut	257 units
Washington, D.C.	94 units
Florida	1,356 units
Illinois	2,155 units
Kentucky	41 units
Massachusetts	3,426 units
Maryland	100 units
Michigan	645 units
Missouri	1,538 units
New Hampshire	264 units
Ohio	1104 units
Rhode Island	1,007 units
<b>TOTAL</b>	<b>11,987 units</b>

# Why?

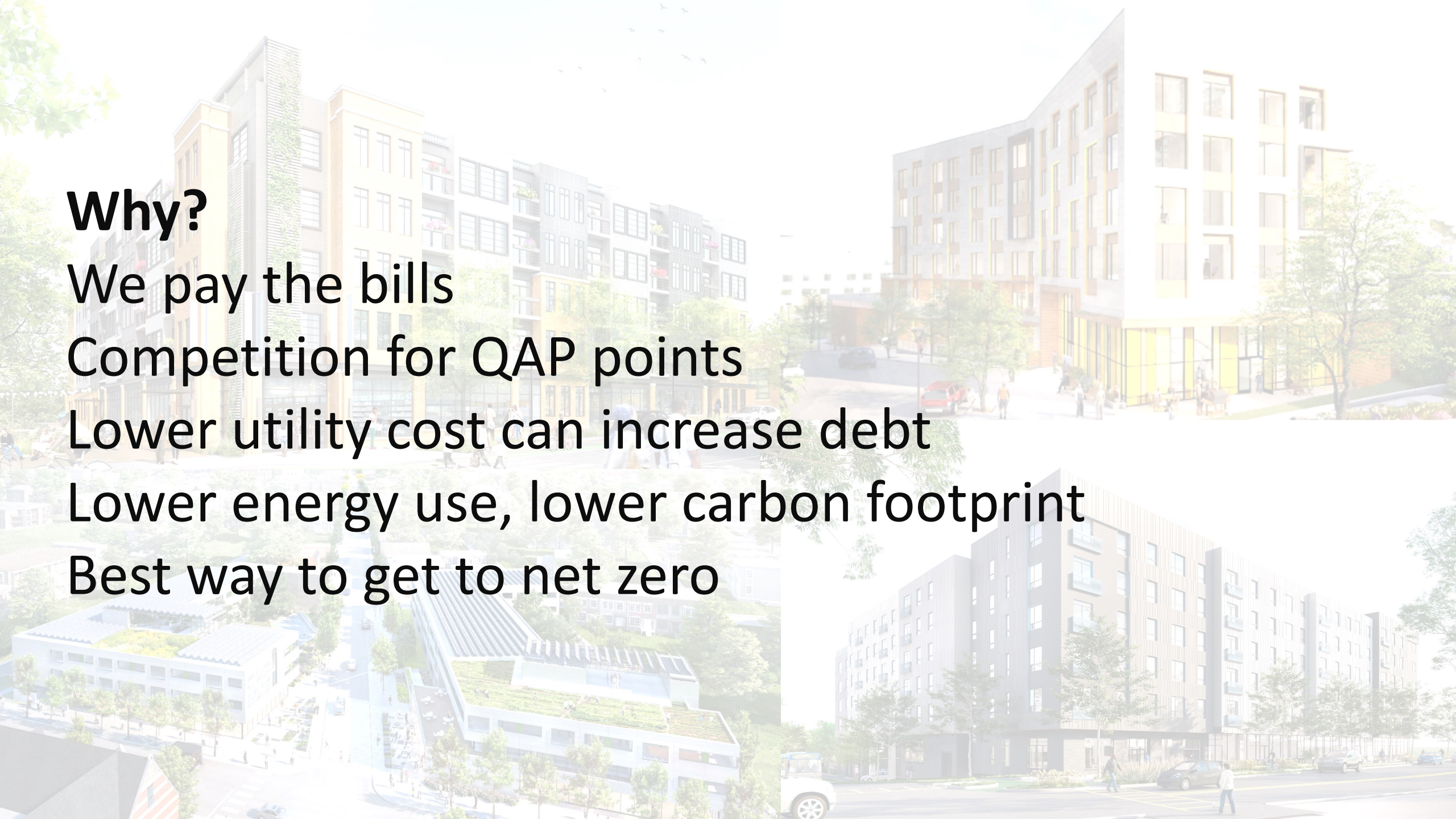
We pay the bills

Competition for QAP points

Lower utility cost can increase debt

Lower energy use, lower carbon footprint

Best way to get to net zero



# How?

Utility Incentives

GC Training at Estimating Phase

GC Required Training to Bid Project

Trainings on-site as new trades begin work

Take the time with architect working on details

Provide extra diagnostic testing during construction

Time

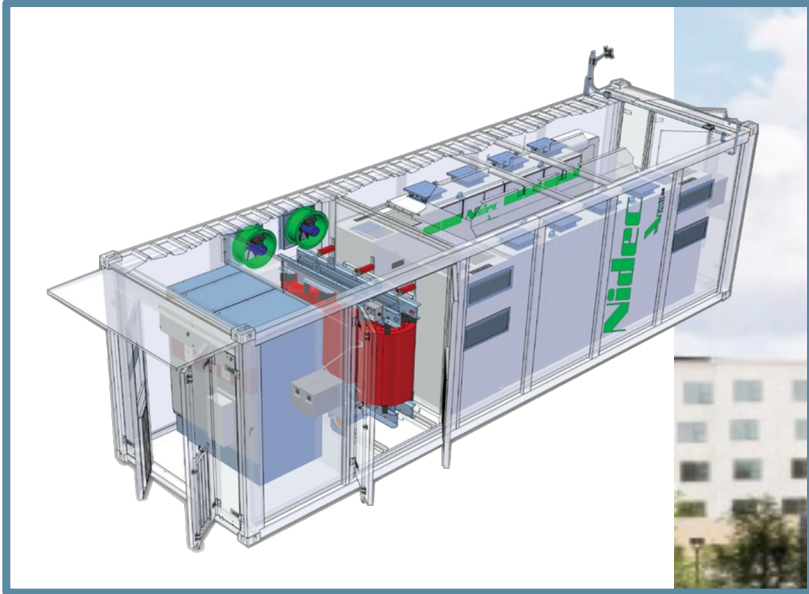
Training

Testing





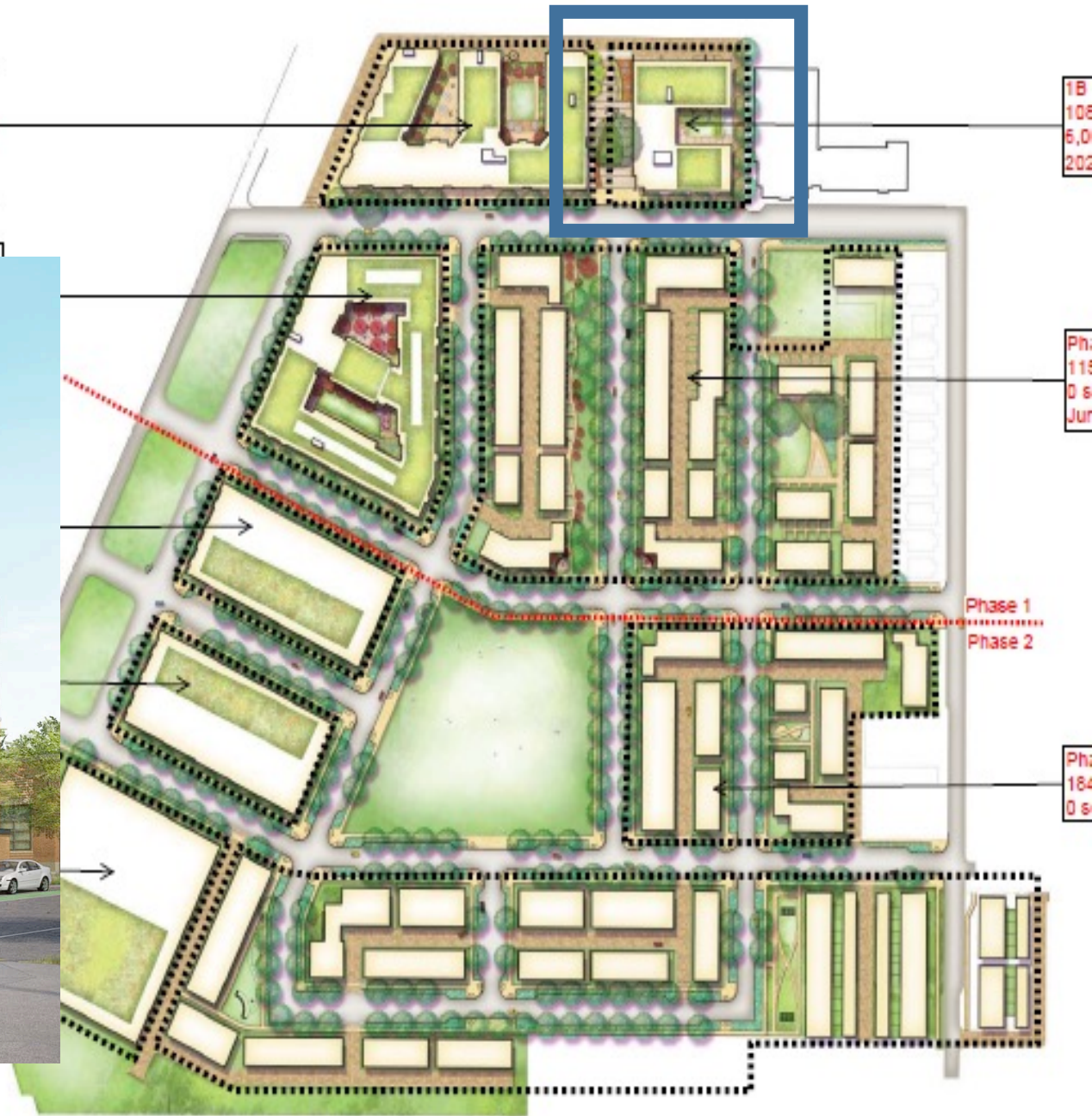
**Mattapan Construction Photos**



**Bartlett Lot D, 52 Units Senior, Boston, MA**

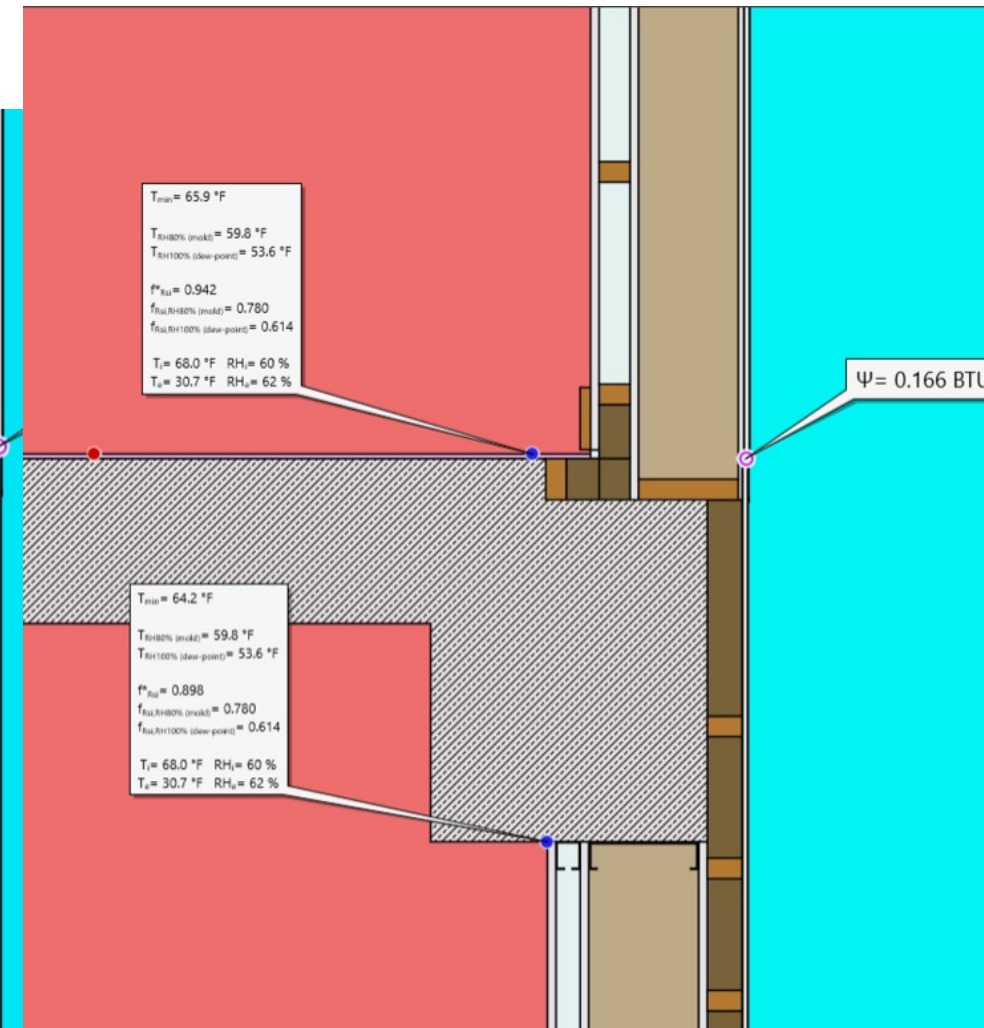
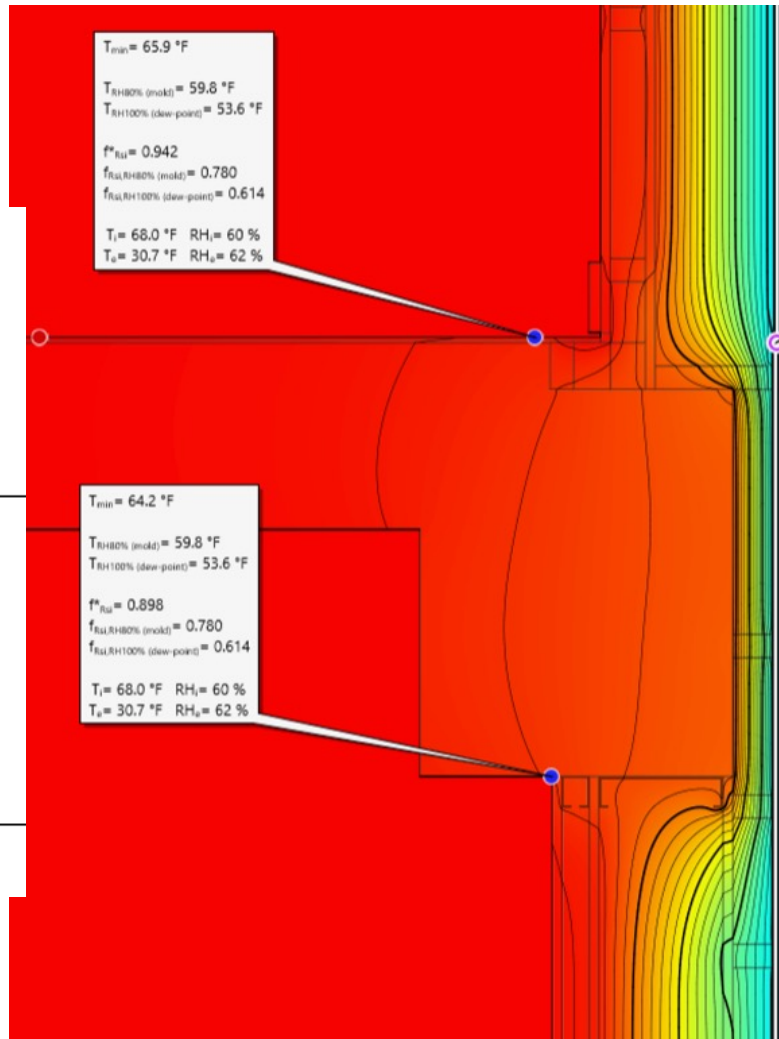
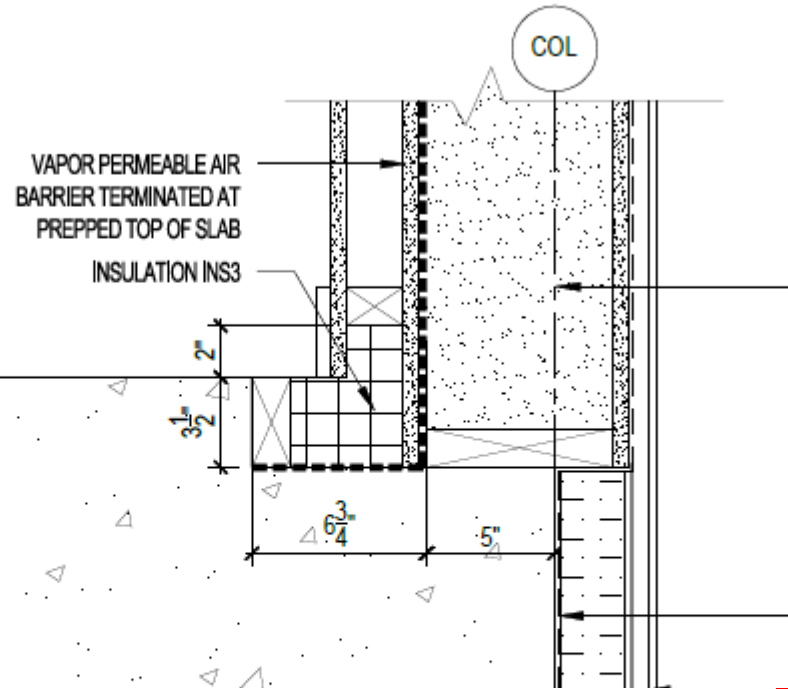


able restaurant)



# Barry Farm, DC

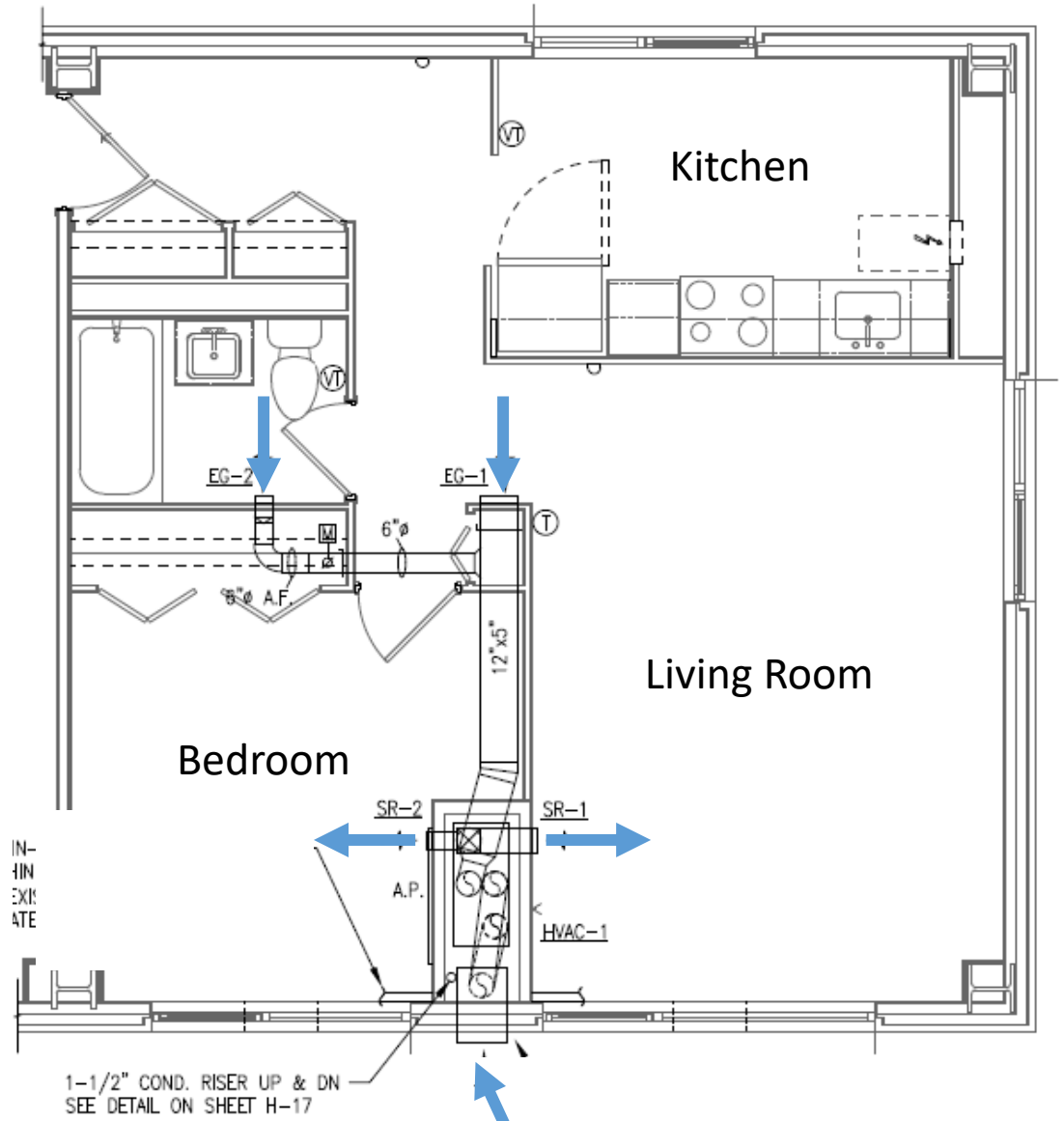
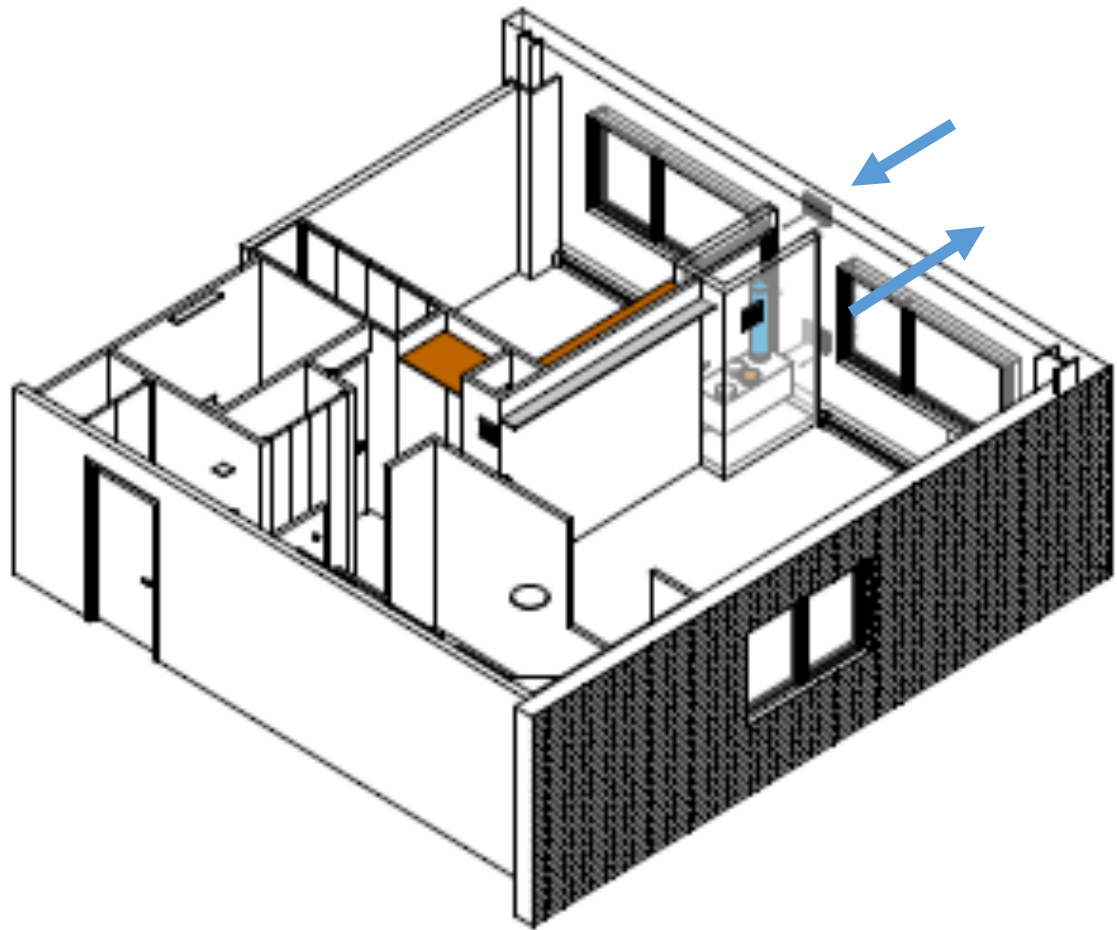






**Salem Heights**  
**283 Units Family**  
**Salem, MA**





18 x 12" Intake Louver Above  
18 x 12" Exhaust Louver Below



Ventilation Temperature Humidity

Rooftop

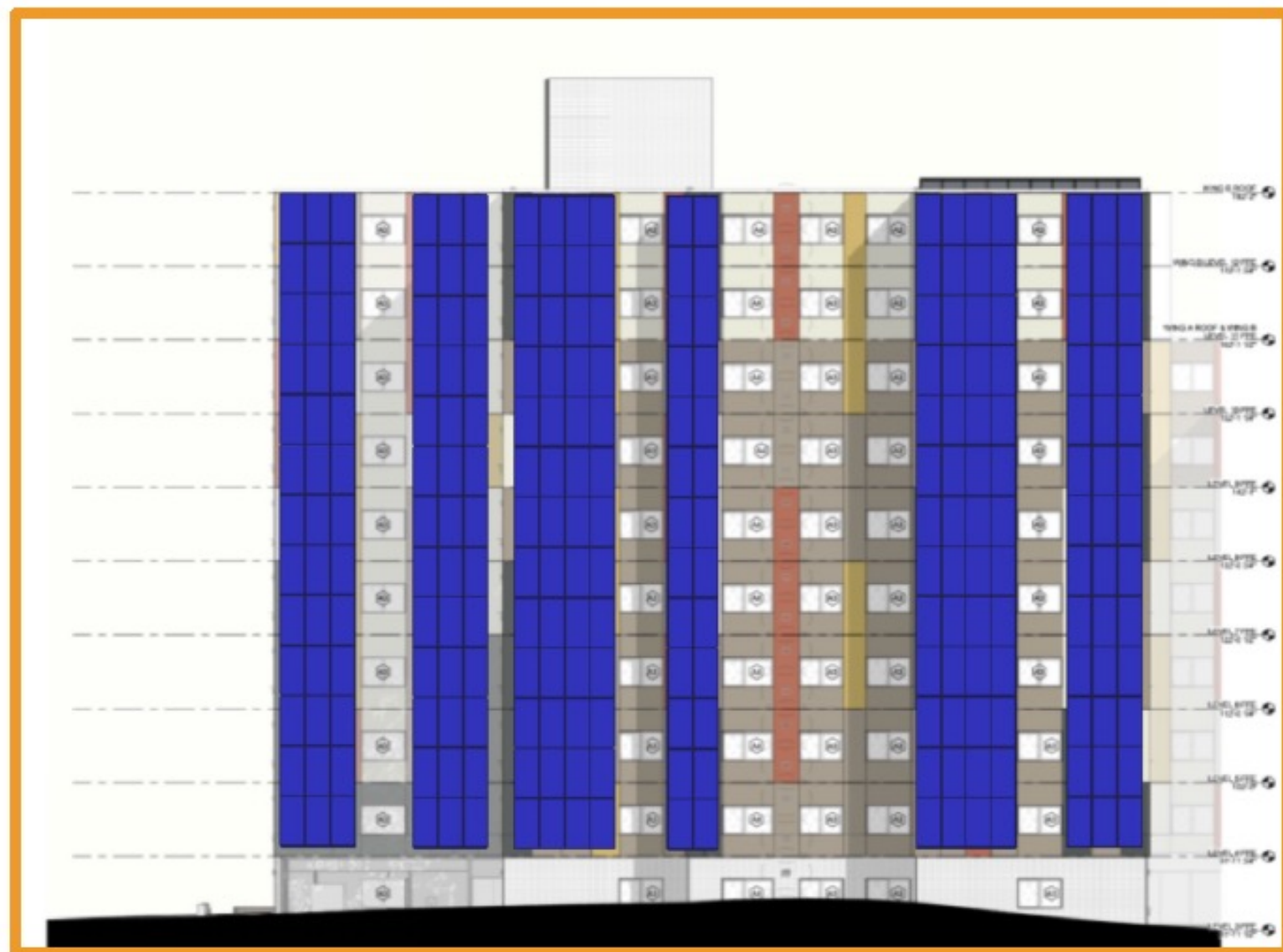
---

**269.2 kW DC**

South Wall

---

**106.2 kW DC**





**How close are we?**

**Robust Enclosure  
All Electric HVAC  
Solar PV (Wall and Roof)**



**Thank you.**

**[Jklump@poah.org](mailto:Jklump@poah.org)**