



Roussa Cassel & Tessa Bradley  
Principal Architects/ CPHB & CPHC



Artisans Group is a 10 person,  
100% women owned full service  
**Architecture+Planning** company

And we do a lot of projects in the Pacific Northwest and beyond...







Jan Pratshe  
CEO/ Co-Owner/ Head of Design



Rane Wardwell  
CFO/ Co-Owner/ Head of Production



We are an Canadian 8 person PH prefab company, offering full services and Installation, located in Southeast British Columbia.





COLLECTIVE  
CARPENTRY



**Principled.**  
**Performance.**  
**Prefab.**

High performance building  
+ Off-site construction

*Currently serving the western United States and  
western Canada.*

*Learn how our experience, flexibility,  
communication, and commitment to quality can  
be of value to your next project.*



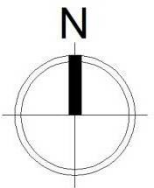
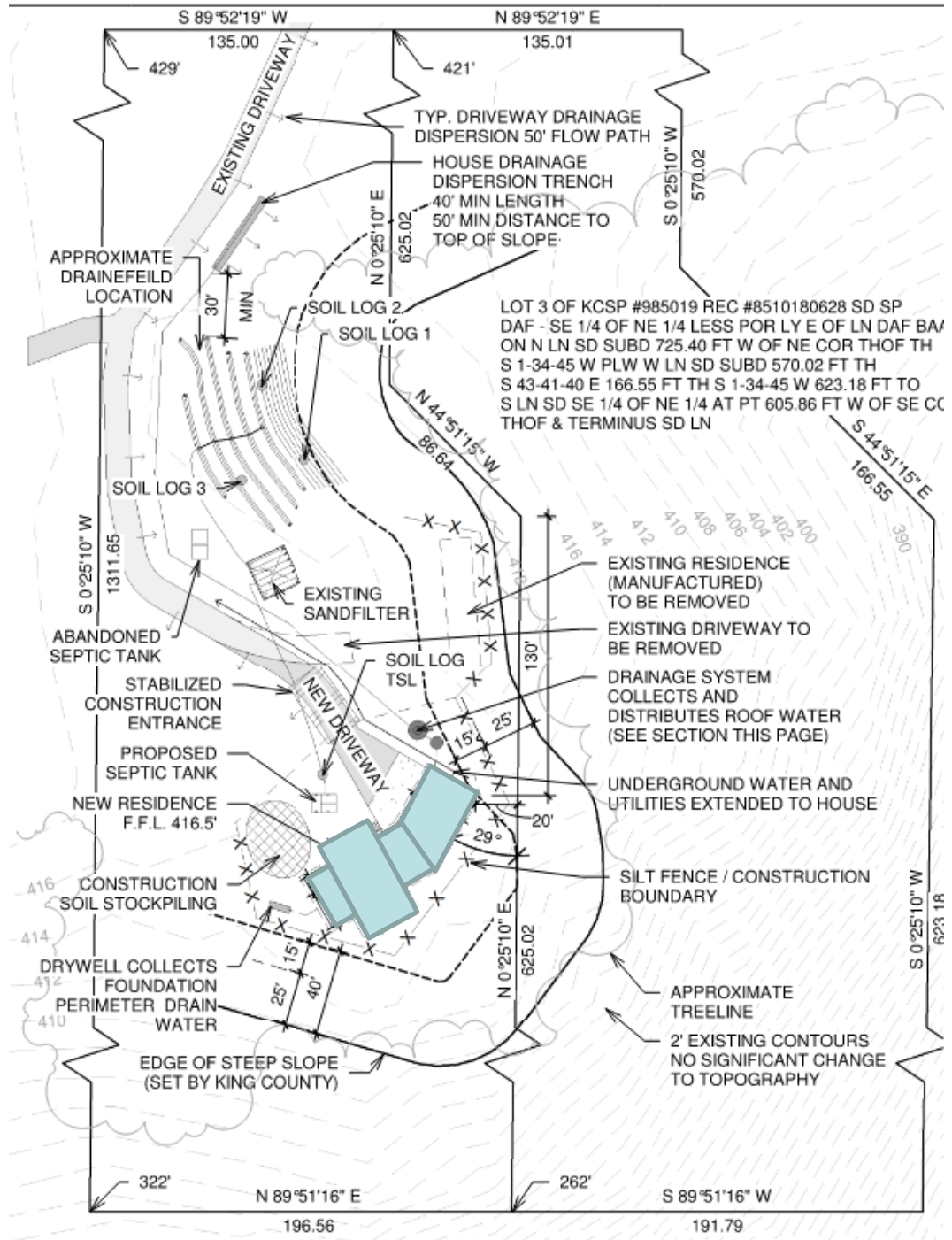
# Statera Haus, PHIUS modeled Non-Certified Auburn, Washington

## Design Ethos

Semi Rural setting outside of Seattle, sculptural response

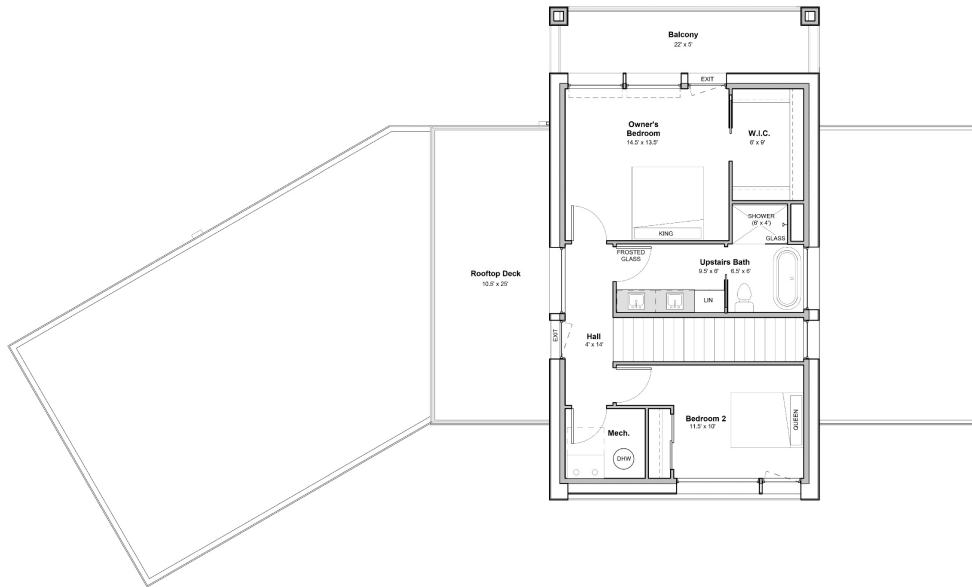
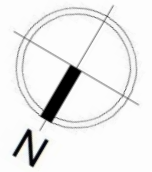
Crisp, austere, northwest Modern, a *parti* of stacked cantilevered boxes

Lots of glass and few hallways

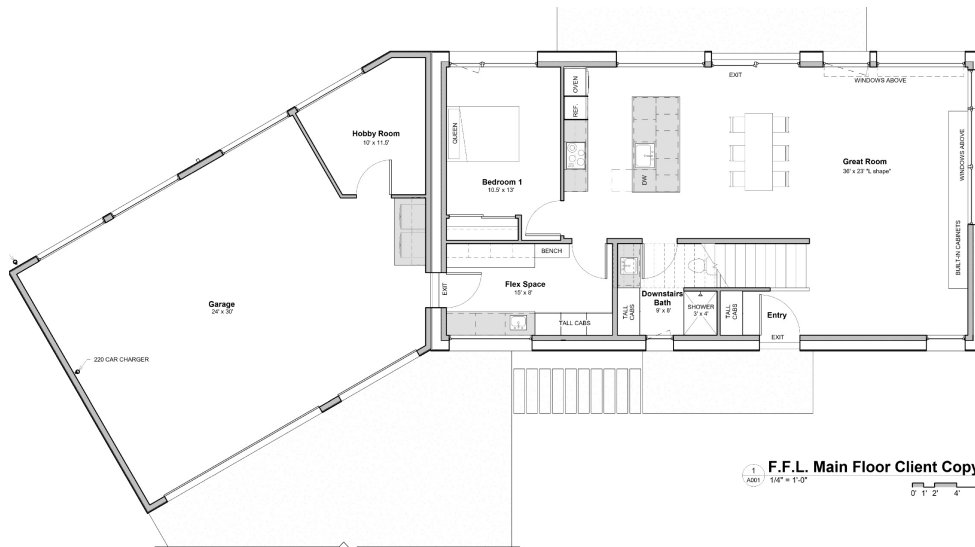


Site Plan





1 F.F.L. 2nd Floor Client Copy  
ASBZ 1/4" = 1'-0"  
0 1' 2' 4' 8'



1 F.F.L. Main Floor Client Copy  
ASBZ 1/4" = 1'-0"  
0 1' 2' 4' 8'



## Stratera House Specs

(Nerd Stuff)

- R- 28 6” EPS under slab insulation
- R-54 Total wall insulation dense pack cellulose
- Roof R-84 dense pack cellulose and foam
- Zehnder ComfoAir Q350
- Sanden DHW
- Zola Vinyl Windows
- Approx. 5100 heating degree days
- 0.5 ACH @ 50 pascals at framing before more minor sealing efforts

Mechanical system:	<b>The Artisans Group</b>					
Street Address:	<b>1508 4th Ave NE</b>					
City, State, Zip:	<b>Olympia, WA 98506</b>					
Year of construction:	<b>2018</b>	Interior temperature winter:	<b>68.0</b>	°F	Enclosed volume V <sub>e</sub> ft <sup>3</sup> :	<b>27557</b>
No. of dwelling units:	<b>1</b>	Interior temperature summer:	<b>77.0</b>	°F	Mechanical cooling:	<b>x</b>
No. of occupants:	<b>4.0</b>	Internal heat sources winter:	<b>0.93</b>	BTU/h.ft <sup>2</sup>		
Spec. capacity:	<b>13</b>	BTU/F per ft <sup>2</sup> TFA	Ditto summer:	<b>1.10</b>	BTU/h.ft <sup>2</sup>	

**Internal heat gains**  
Utilization pattern: **Dwelling**  
Type of values used: **PHPP calculation ('IHG' works**  
**Fill in 'IHG' worksheet**

**Planned number of occupants**  
**4** **User-determined**

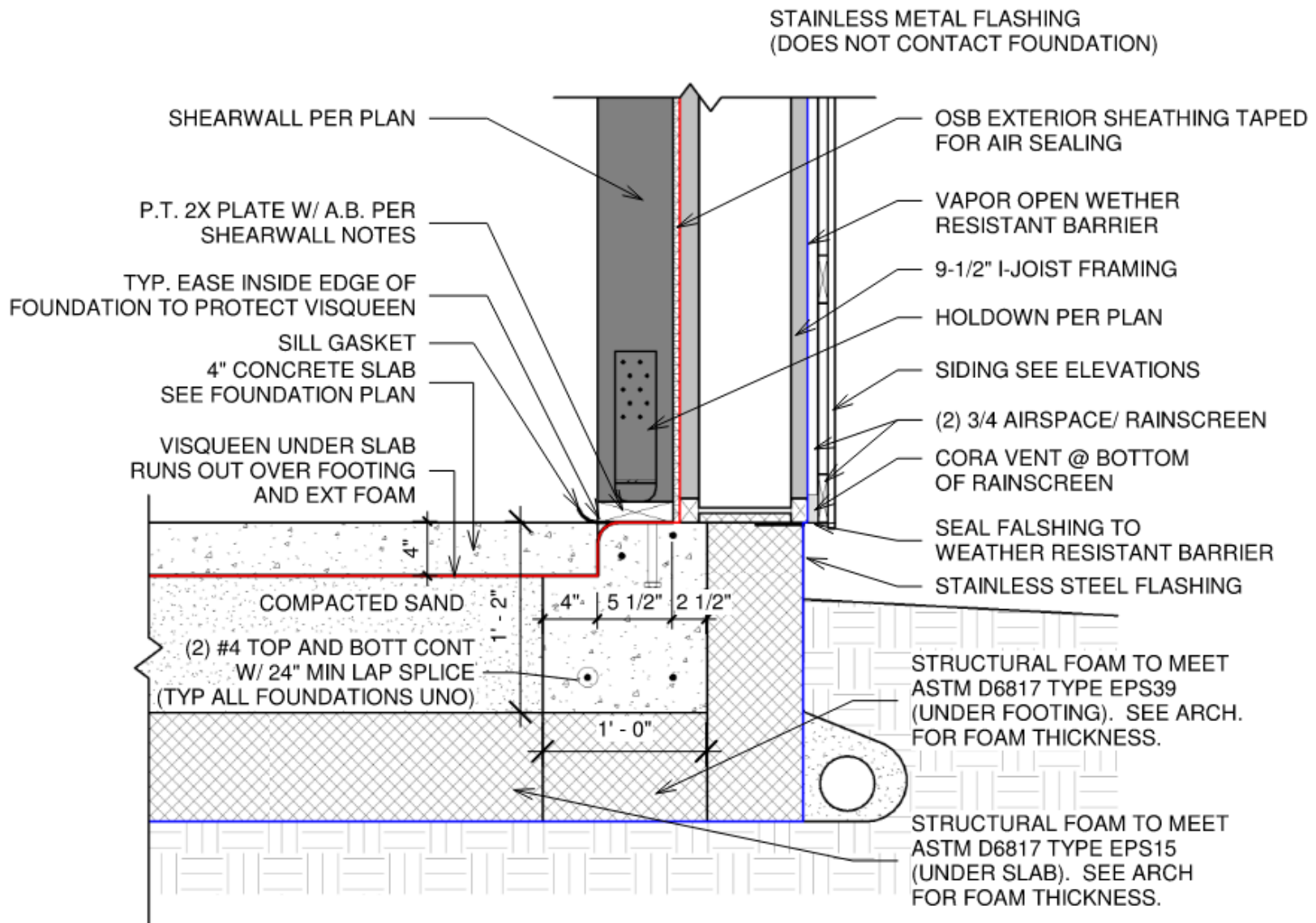
Specific building demands with reference to the treated floor area						
		Treated floor area	1818	ft <sup>2</sup>	Requirements	Fulfilled?*
<b>Space heating</b>	Heating demand	<b>3.38</b>	<b>kBTU/(ft<sup>2</sup>yr)</b>	63% of	5.40 kBTU/(ft <sup>2</sup> yr)	<b>yes</b>
	Heating load	<b>2.63</b>	<b>BTU/(hr.ft<sup>2</sup>)</b>	71% of	3.70 BTU/(hr.ft <sup>2</sup> )	<b>yes</b>
<b>Space cooling</b>	Overall specif. space cooling demand	<b>0.46</b>	<b>kBTU/(ft<sup>2</sup>yr)</b>	46% of	1.00 kBTU/(ft <sup>2</sup> yr)	<b>yes</b>
	Cooling load	<b>0.67</b>	<b>BTU/(hr.ft<sup>2</sup>)</b>	20% of	3.40 BTU/(hr.ft <sup>2</sup> )	<b>yes</b>
	Frequency of overheating (> 77 °F)		<b>%</b>		-	<b>-</b>
<b>Primary energy</b>	Heating, cooling, auxiliary electricity, dehumidification, DHW, lighting, electrical appliances	<b>35.2</b>	<b>kBTU/(ft<sup>2</sup>yr)</b>	76% of	46.6 kBTU/(ft <sup>2</sup> yr)	<b>yes</b>
	DHW, space heating and auxiliary electricity	<b>8.9</b>	<b>kBTU/(ft<sup>2</sup>yr)</b>		-	<b>-</b>
	Specific primary energy reduction through solar electricity		<b>kBTU/(ft<sup>2</sup>yr)</b>		-	<b>-</b>
<b>Airtightness</b>	Pressurization test result n <sub>50</sub>	<b>0.6</b>	<b>1/h</b>		0.6 1/h	<b>yes</b>

\* empty field: data missing; '-': no requirement

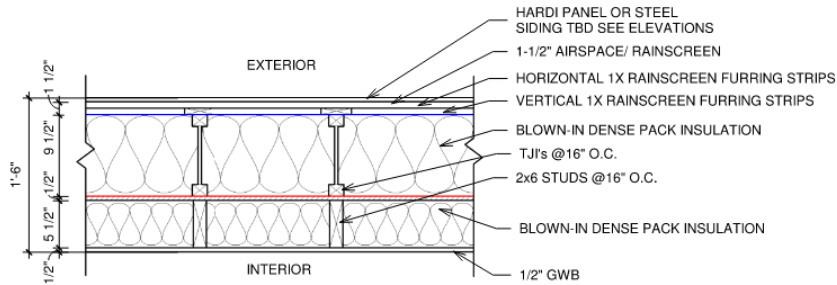


Passive House?	<b>yes</b>
----------------	------------

Certification type **Passive House**



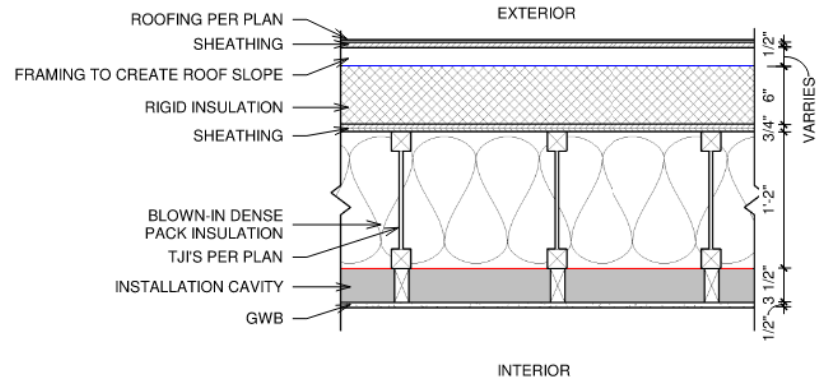
## Detail - Typical Insulated Foundation



### 1 Assemblies - Typical Wall (W1)

1  
A501

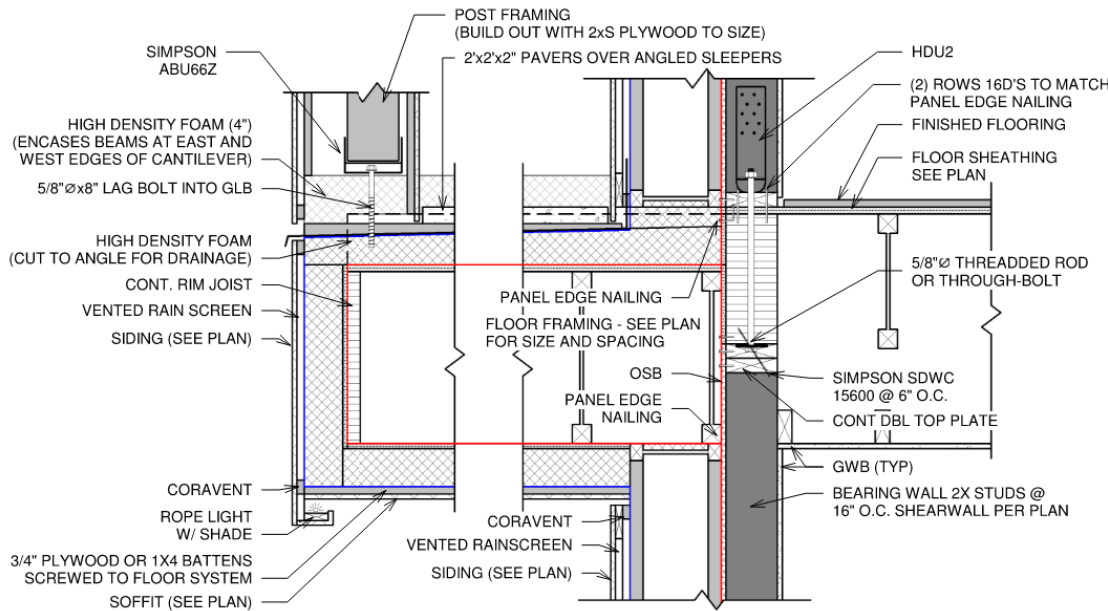
1" = 1'-0"



### 6 Assemblies - Typical Roof (R1, R2)

6  
A501

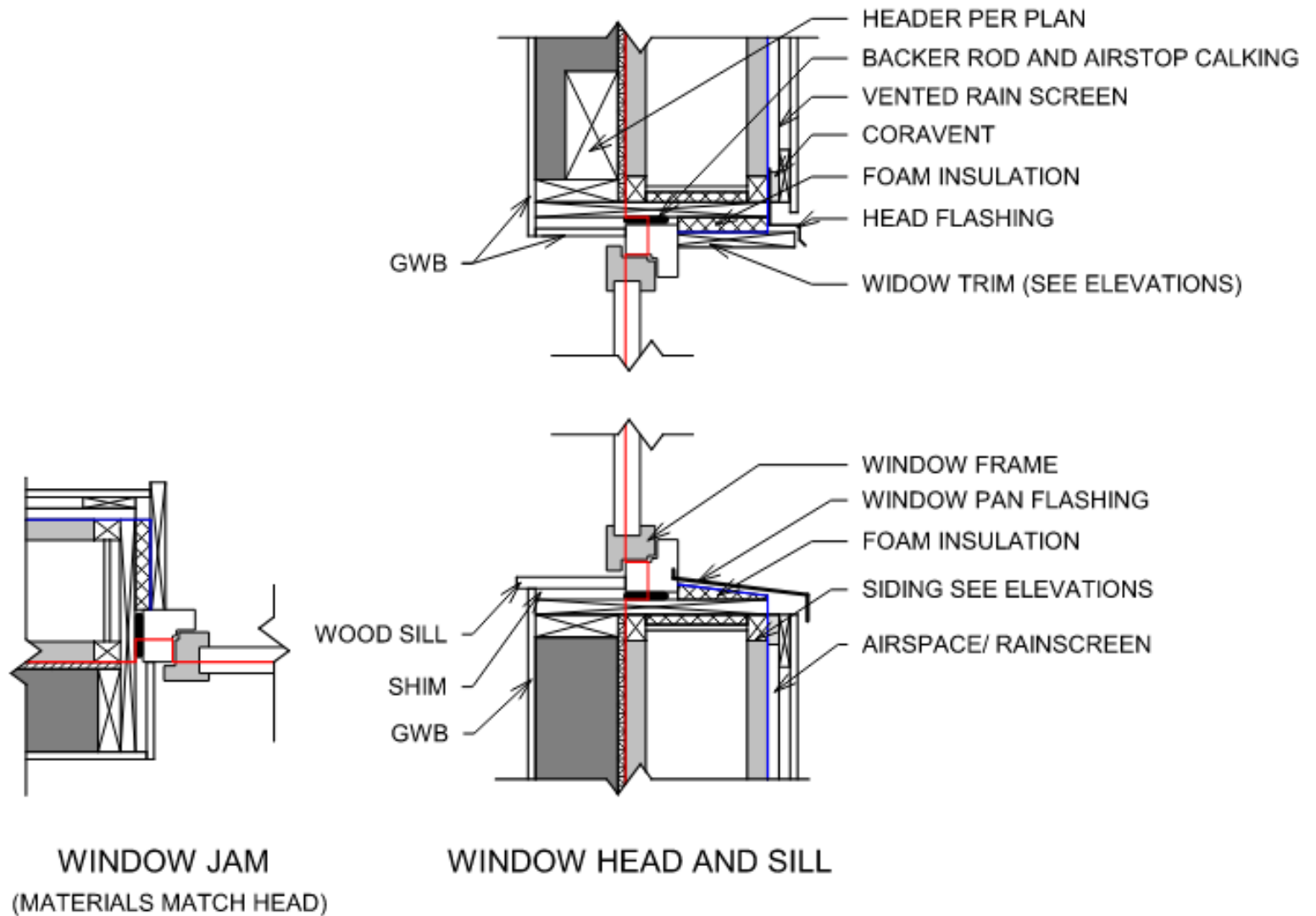
1" = 1'-0"



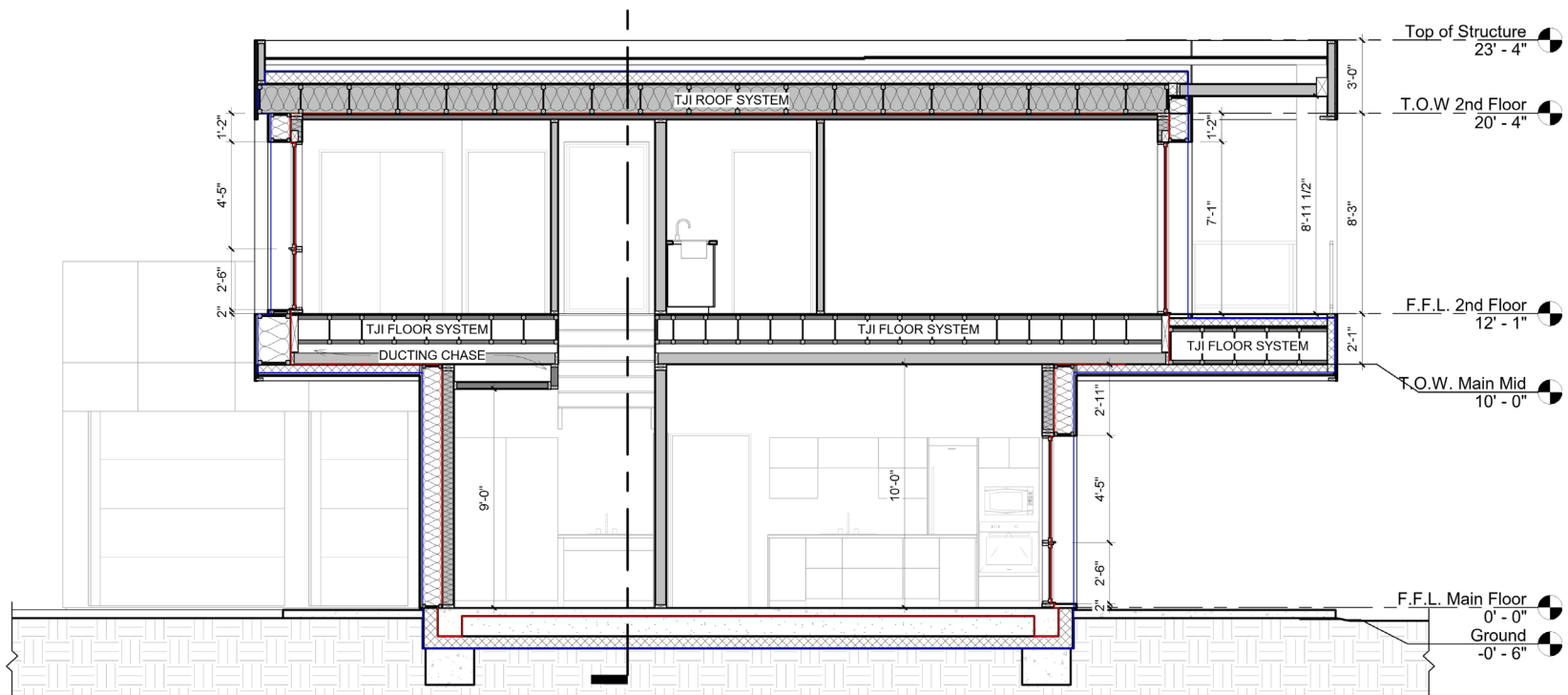
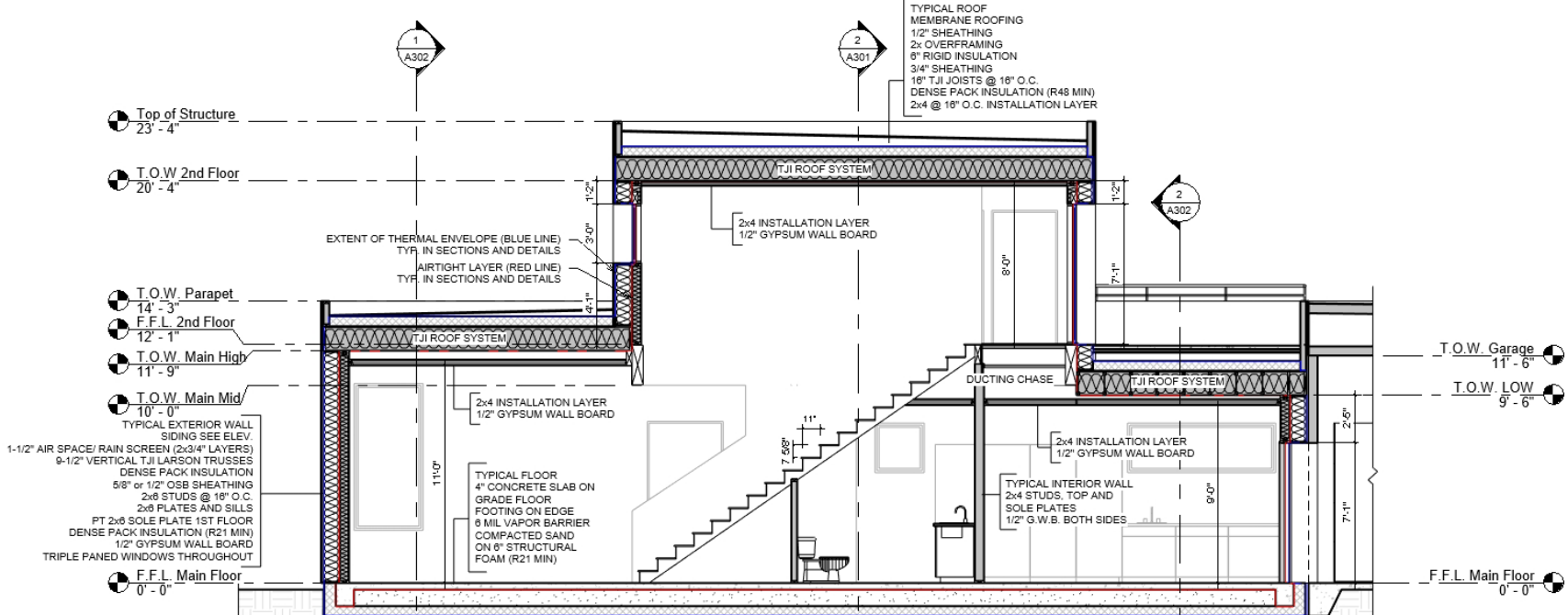
### 7 Detail - Floor System @ Cantilever (Balcony)

7  
A503

1" = 1'-0"



⑥ Typical Window  
1" = 1'-0"



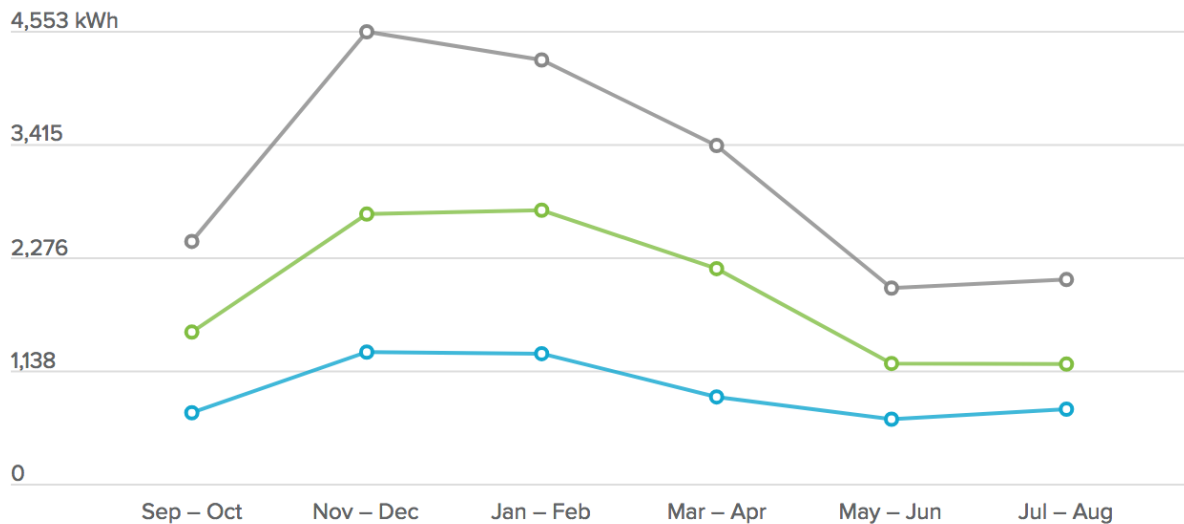
Fuel type: electricity



Sep 2017 – Aug 2018  
My neighbor comparison

Select view:

by year



Find tips to reduce your use:

- [Free steps to take](#)
- [Smart purchases](#)
- [Great investments](#)



Neighbors



Usage



Costs



Weather

You

All neighbors

Efficient neighbors

[Who are my neighbors?](#)



























modern architecture healthy and sustainable design

ADU Plans

Passive Prefab Plans

Passive Prefab

Best selling ▾



Statera House  
\$10,000.00



Aperture House  
\$10,000.00



Passive Prefab DADU  
\$1,500.00

