

Bensonwood & Unity Homes

115 associates, including architects, engineers, designers, timber framers, carpenters, woodworkers, project managers and IT staff

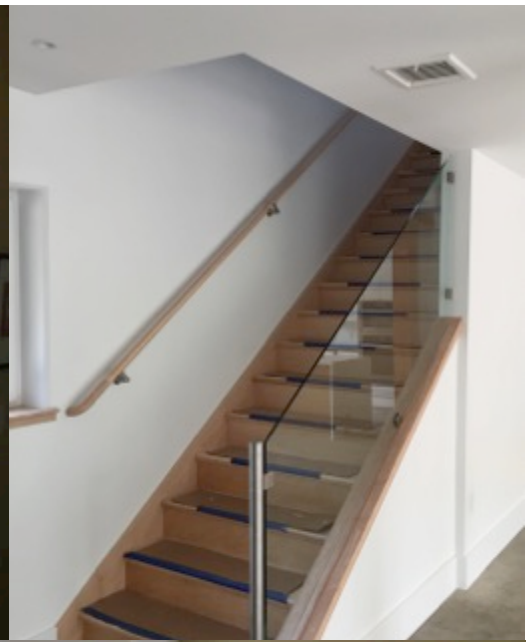


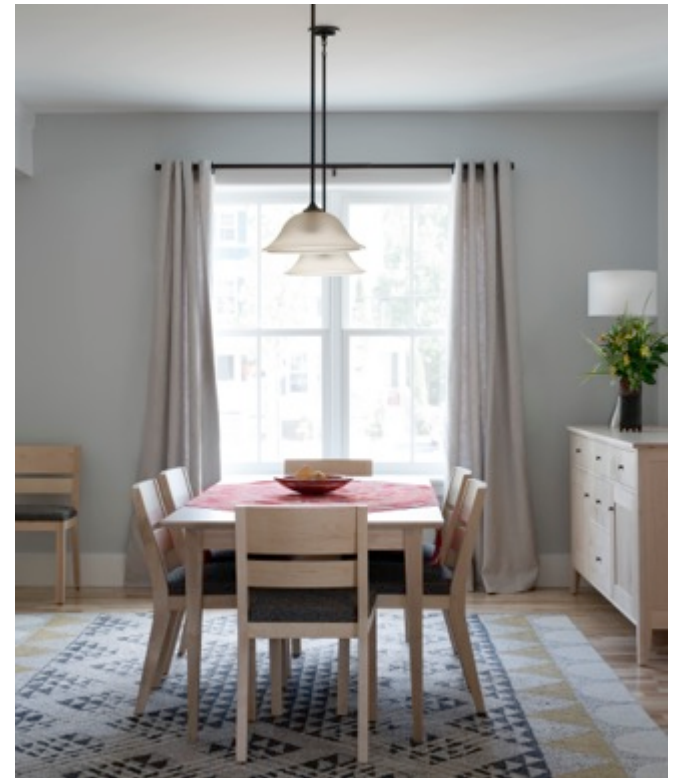


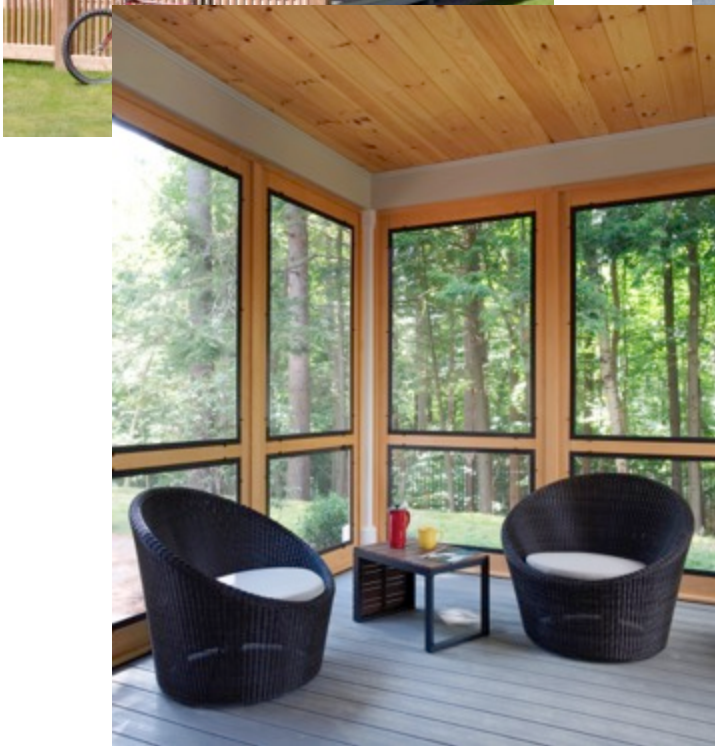






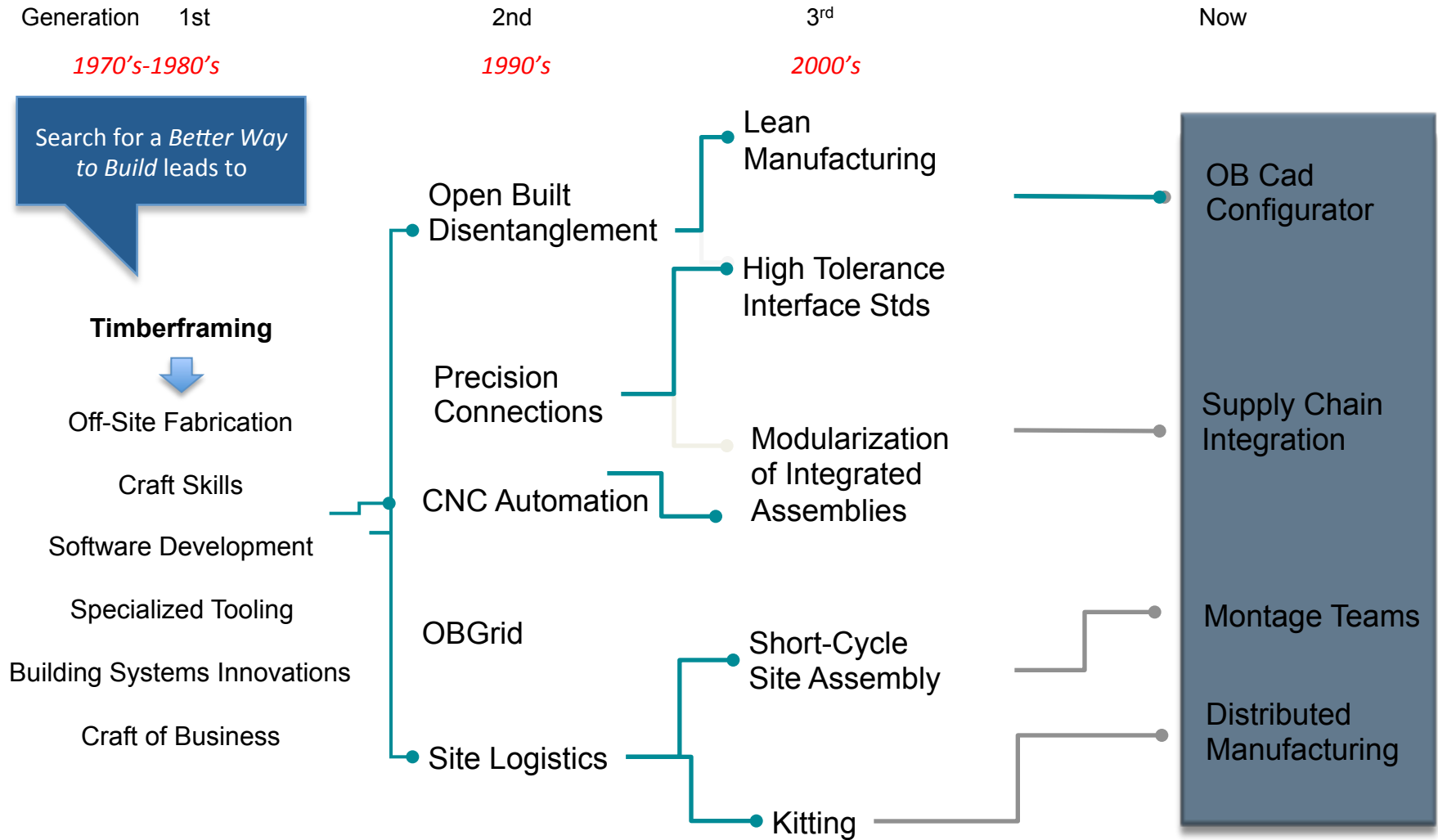








BW2B Family Tree



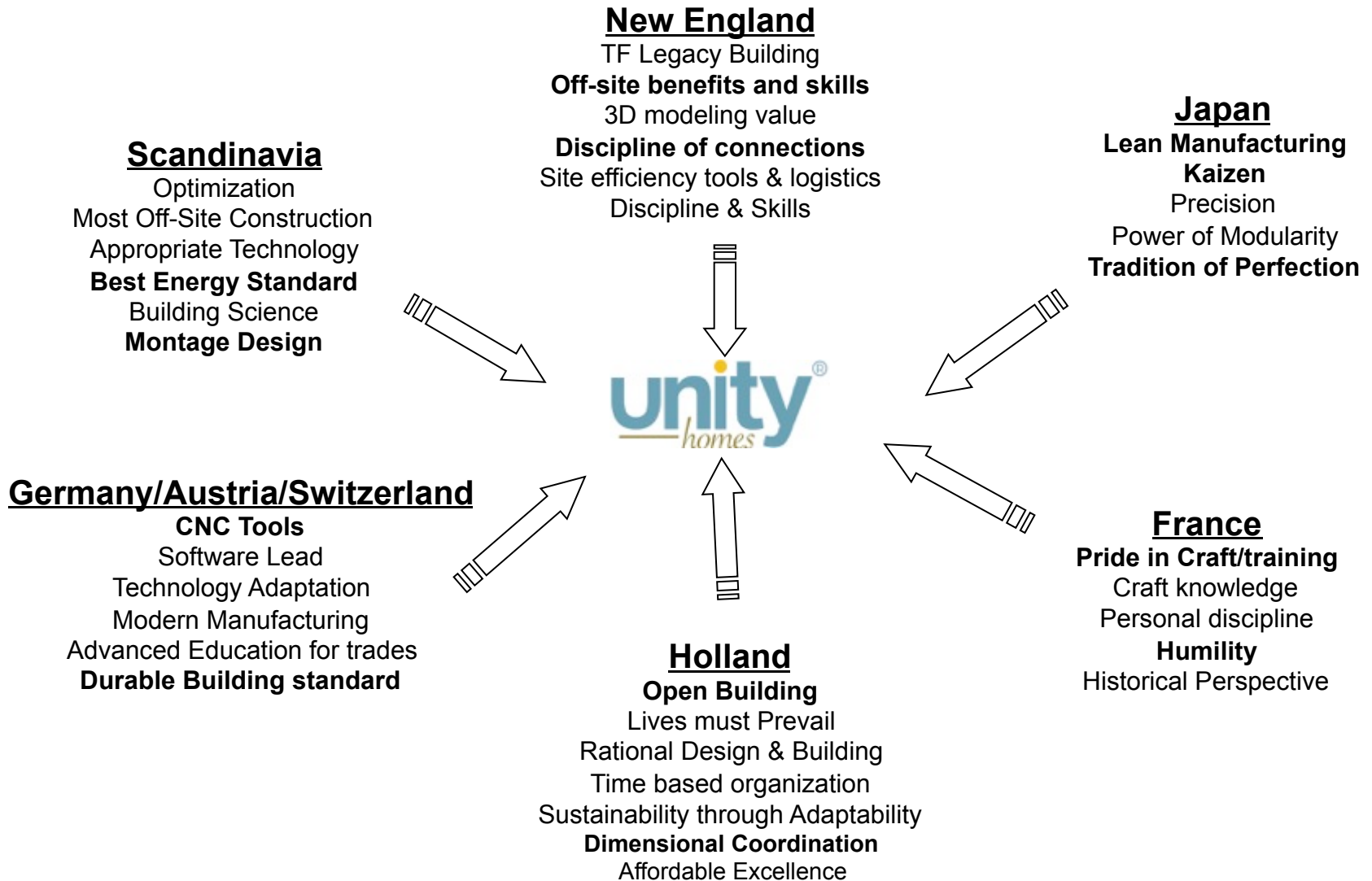
Establishing the Core

Elements of the Platform

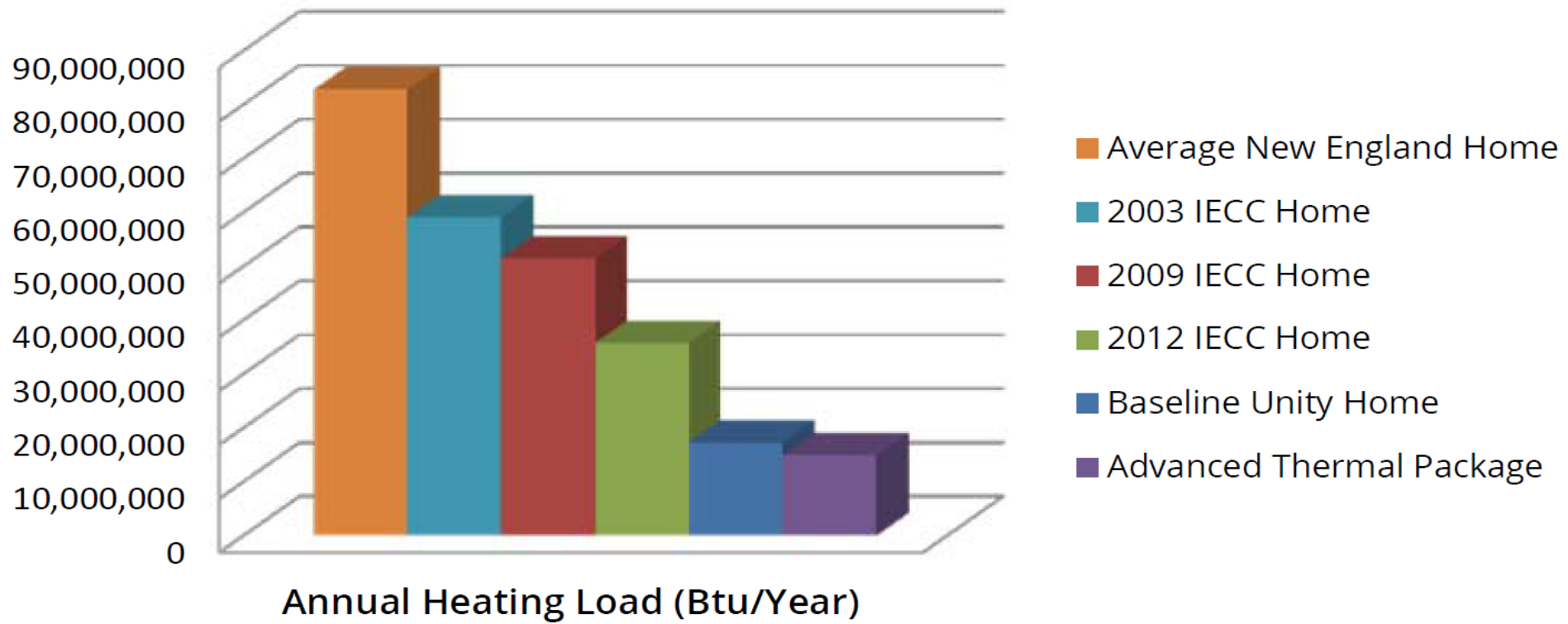
Iterative Development;
Rapid real time Prototyping

Intermediating the
Market w/ Tech Platform

Learn from Everywhere







Lean Manufacturing Practices

Raising quality

Eliminating waste

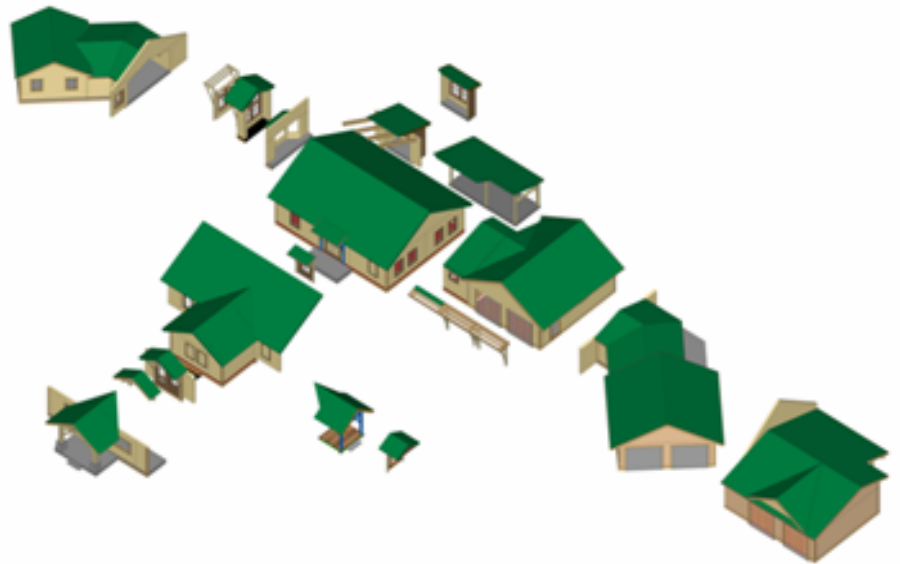
Applying kanbans, kaizens and Value Stream Mapping
to get rid of muda, mura and muri*



*uneven production) [muda](#), waste [mura](#), overworking [muri](#)

BPM to CNC





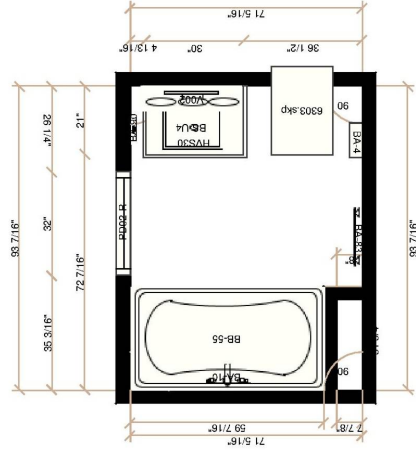
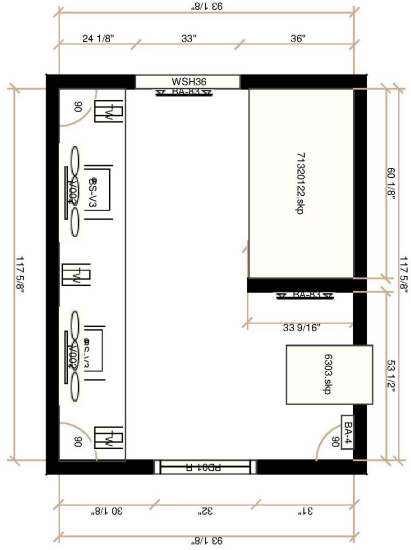
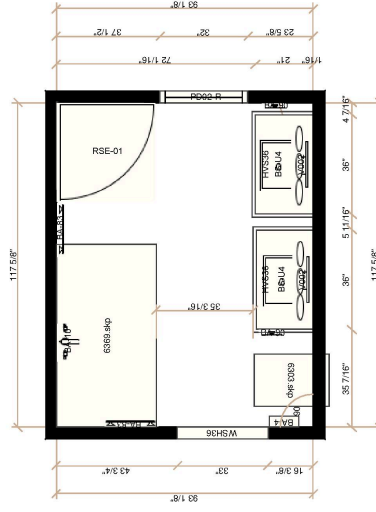
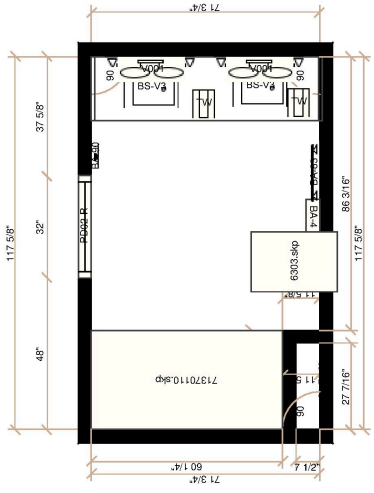
Gantry System

Wall Production



Site Montage





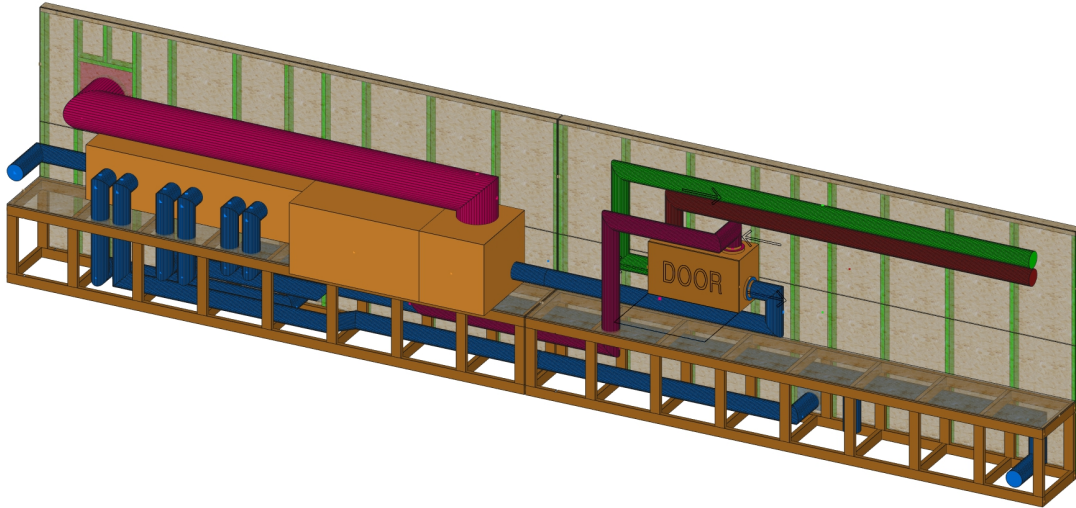
Bath and Mechanical Room Pods



Bathroom Pods Montage



Mechanical Cartridge

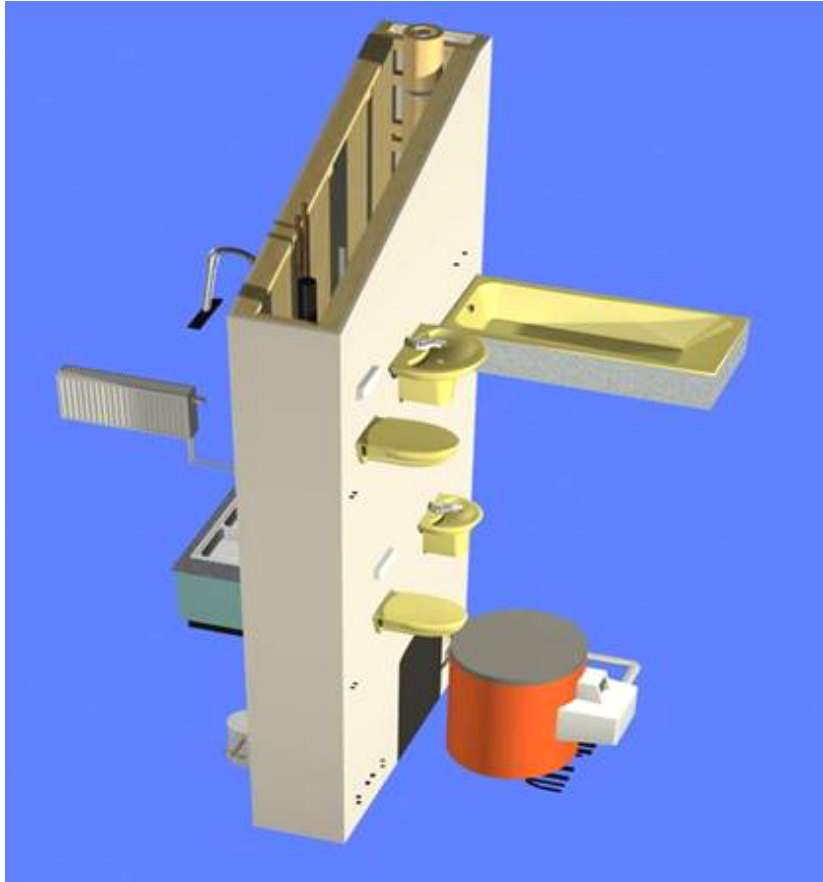


Cartridge Installation



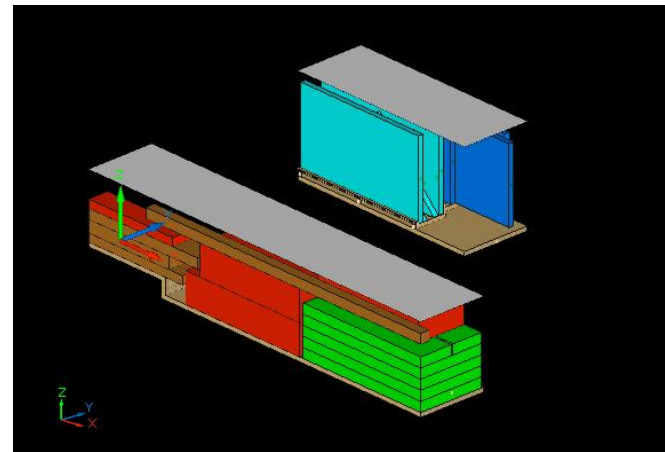
Core-Wall

Integrated Mechanical System Element



Flat Pack Virtual and Actual Shipping

Recycled wrapping



Montage Building

Site for assembly only; avoid cutting and shaping

- Site is the **worst** place to attempt to control
 - Quality
 - Efficiency
 - Cost
 - Time
 - Job satisfaction





Precisely and Consistently Deployed...



- Solutions embedded in products, elements and systems
 - Leads to endless innovation
 - Advanced materials, products, systems toward sustainable living w/ cognition & learning

Email: tedd@bensonwood.com

Blog: teddbenson.com

Websites: unityhomes.com

bensonwood.com