

# Measured vs. Modeled Performance Data Analysis for Affordable Occupied Passive Multifamily Projects

Lisa White, Certification Manager, PHIUS & James Ortega, Certification Staff, PHIUS

Stellar Apartments



Orchards at Orenco



Knickerbocker Commons



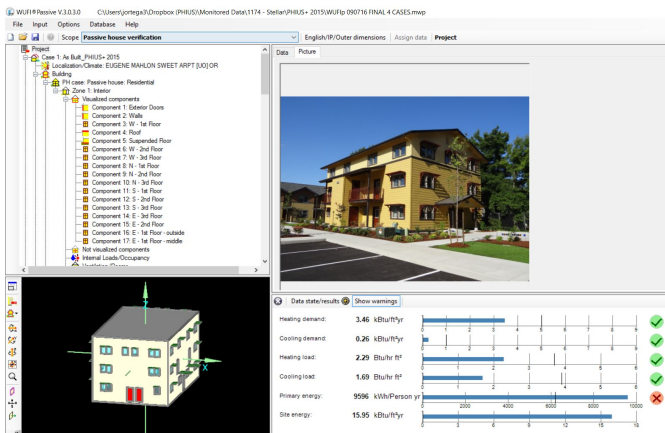
# Importance of Monitoring Energy Use

1. Verify Energy Model Predictions
2. Guide Energy Modeling Protocol
3. More Accurate Modeling & Building Performance Certification
4. Provide Feedback to Occupants
5. HVAC Performance Verification

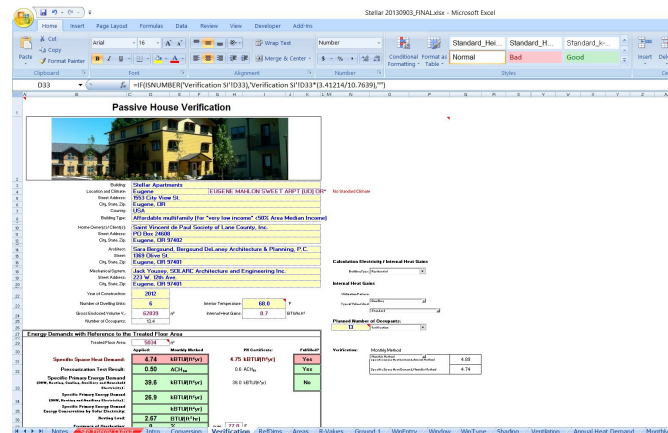
# Methods - Modeling

## 3 Comparative Data Sets per Project

1. **Monitored:** Actual Measured Energy Use
2. **PHIUS+:** Modeled Energy Use under PHIUS+ Passive Building Standard
  - a. 'Passive House Planning Package' (PHPP)
3. **PHIUS+ 2015:** Modeled Energy Use under PHIUS+ 2015 Passive Building Standard
  - a. WUFI-Passive

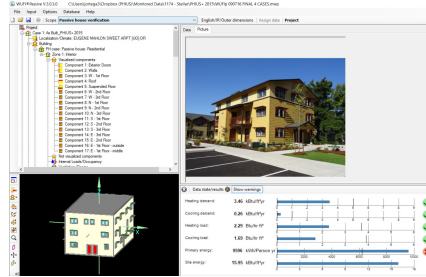


WUFI-Passive

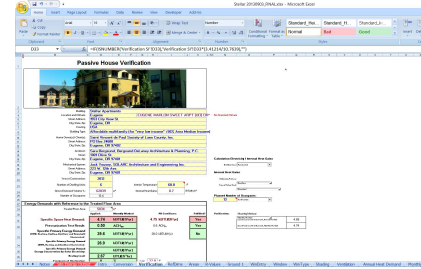


PHPP

# Methods - Variances in Modeling Protocol



WUFI-Passive (PHIUS+ 2015)



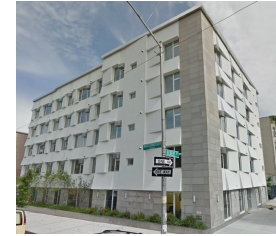
PHPP (PHIUS+)

Occupancy	# bedrooms + 1, per unit	1 person per 377 sf
Internal Heat Gains	Calculated Value	Default Value
Misc Loads & Lighting	80% RESNET Assumptions	PHPP Default
Space Conditioning Criteria	Climate Specific	Passivhaus Targets

# Methods - Derivation of Estimated Monthly Data

- Monthly Estimates from Static Model
  - Limitation: PHPP & WUFI Passive - Output Annual Energy Use
- Systems:
  - Heating Energy - Monthly Demand + Seasonal Performance of System
  - Cooling Energy - Monthly Demand
  - Hot Water (Heat Pump Water Heaters only) - Seasonal Performance of System
- Appliances:
  - Major Appliances (Refrigerators, Freezers, Clothes Washers, Clothes Dryers, Dishwashers, Cooktops, Lighting, etc...) - Divided Evenly
  - Hot Water (Electric Resistance or Natural Gas)
  - Heat Recovery Ventilation (HRV & ERV)

# Three Case Studies



	<i>Stellar Apartments</i>	<i>Orchards at Orenco Phase 1</i>	<i>Knickerbocker Commons</i>
<i>Location</i>	Eugene, OR	Hillsboro, OR	Brooklyn, NY
<i>Square Footage (iCFA)</i>	5,848 ft <sup>2</sup>	48,035 ft <sup>2</sup>	31,903 ft <sup>2</sup>
<i>Number of Units</i>	6	57	24
<i>Modeled Occupancy</i>	13 (PHIUS+) 18 (PHIUS+ 2015)	113 (PHIUS+) 131 (PHIUS+ 2015)	72 (PHIUS+) 72 (PHIUS+ 2015)
<i>PHIUS+ Project #</i>	1174	1203	1274

# Stellar Apartments



# Stellar Apartments

## Monitored Data

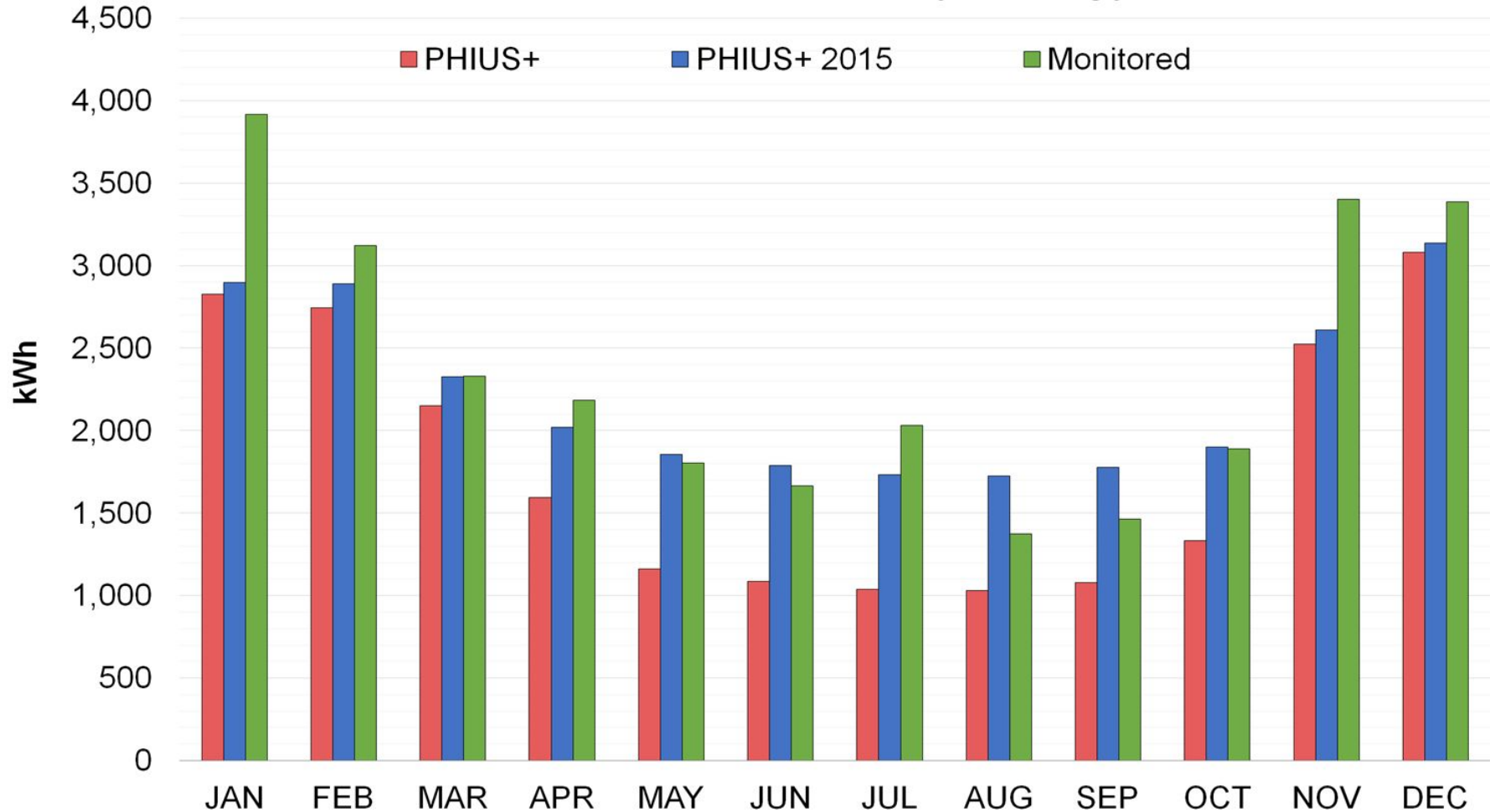
- 54 - Unit Multifamily Affordable Housing Development
- One - 3-Story (6 units) built to PHIUS+ Standard
- Monitoring Systems
  - 8 Electricity Monitors per Unit
    - Heating
    - ERV
    - Water Heater
    - Kitchen Range
    - Kitchen Outlets
    - Kitchen Fridge
    - Clothes Washer
    - Other

## Limitations

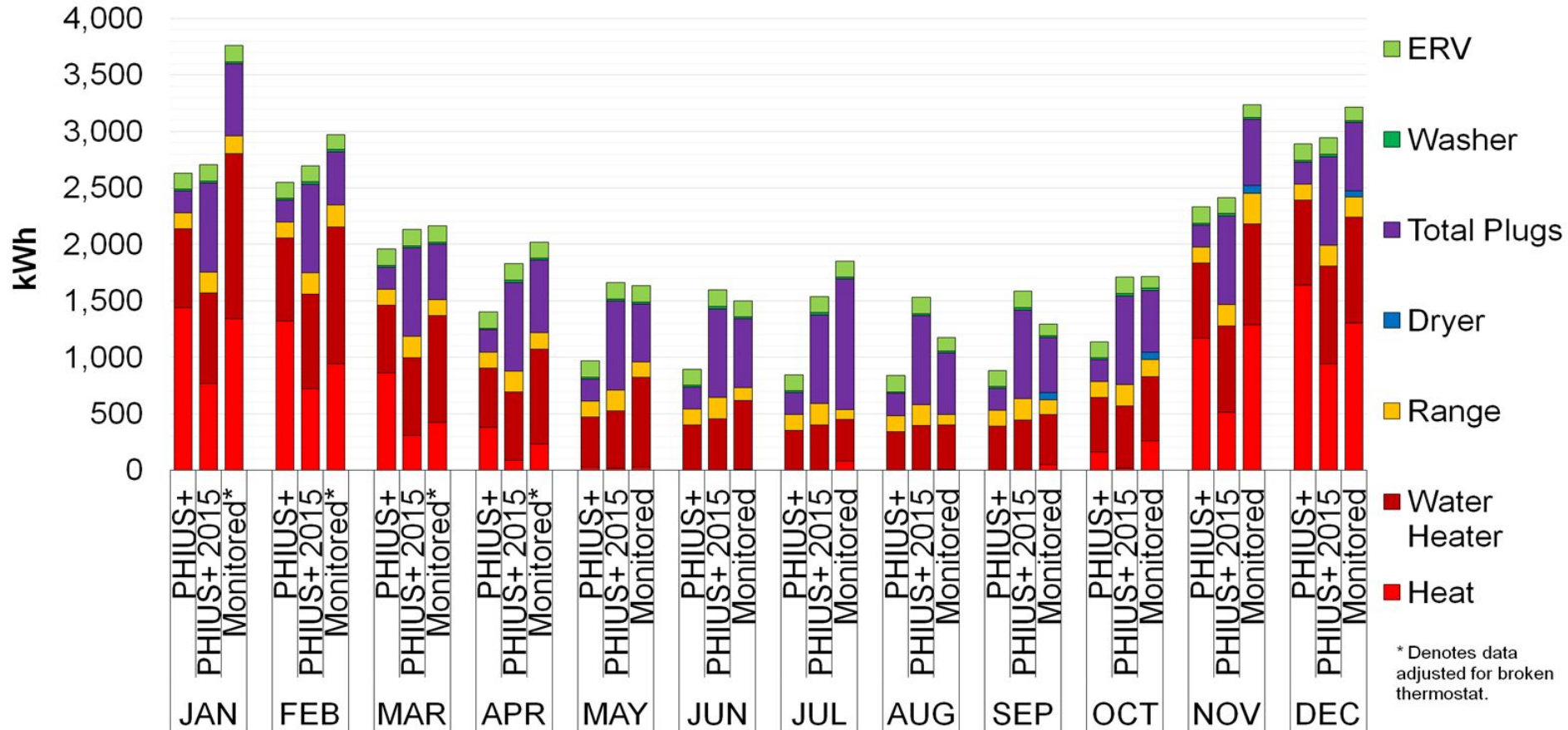
- Energy Model Limitations
  - 'Other' + 'Kitchen Outlets' = 'Lighting/Plug Loads'
  - 7 total categories for comparison
- Shared Space
  - Small Central Stairwell - Not included
- Actual Occupancy Recorded (9)
  - 7 - Adults
  - 1 - Teenager
  - 1 - Toddler
- PHIUS+ Occupancy (13)
- PHIUS+ 2015 Occupancy (18)



# Stellar Apartment - Monthly Energy Use



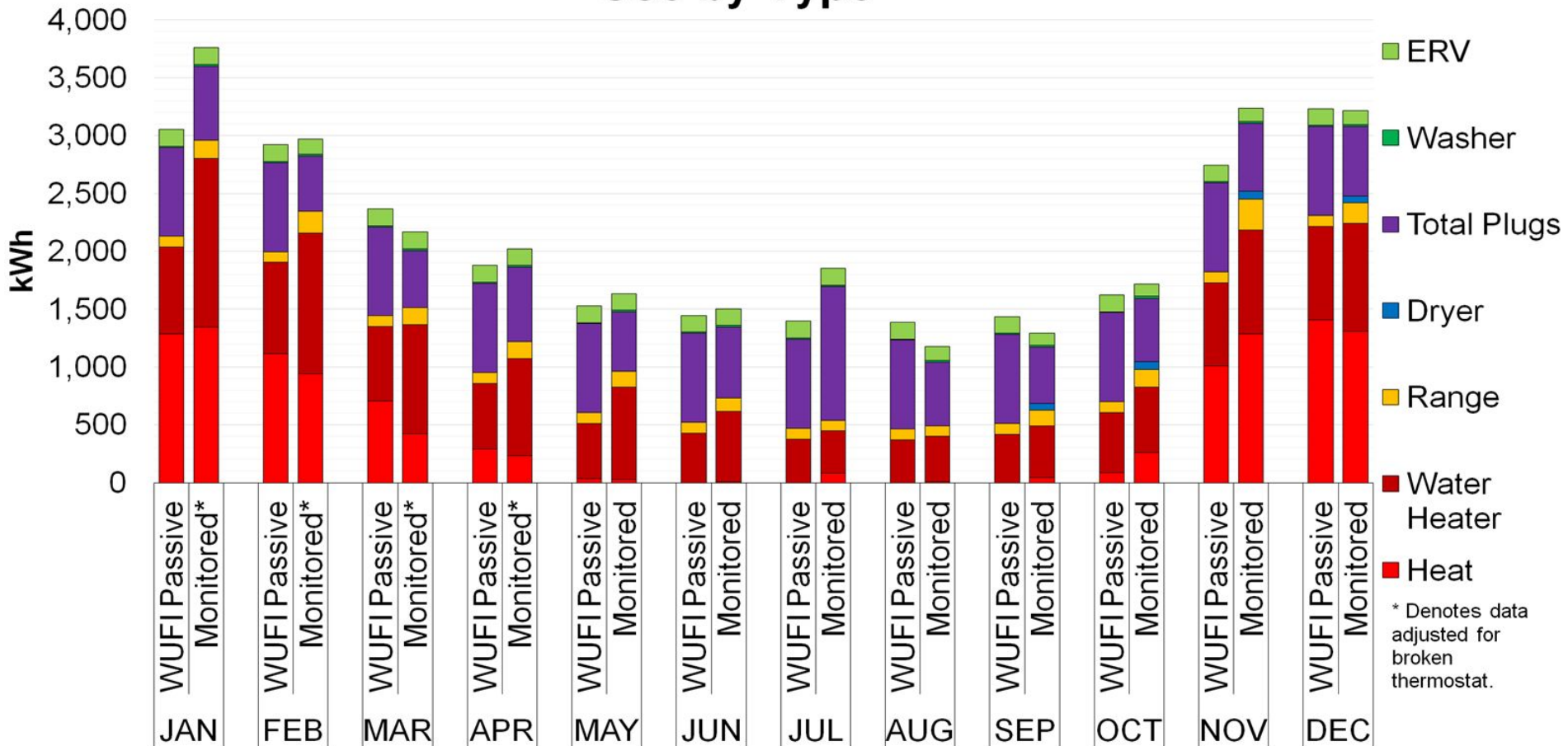
# Stellar Apartments - Monthly Energy Use by Type



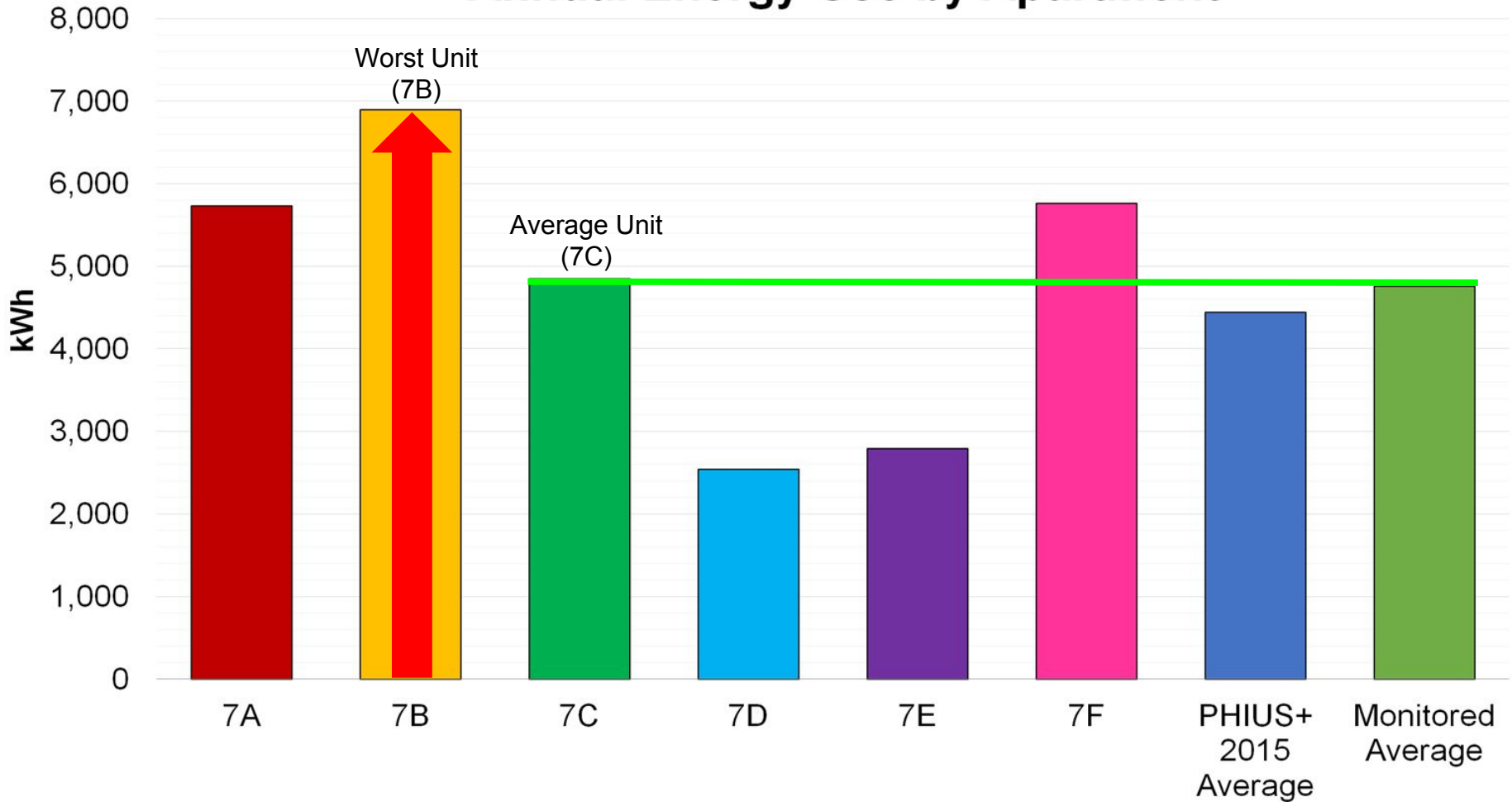
# Stellar Apartments - Test Case

- Modeled PHIUS+ 2015 Hypothesis Test
- Occupancy
  - Changed from 18 to 9 (to match recorded occupancy)
- Heating Set-Point
  - Changed from 68F to 70F
- Hot Water Usage
  - Changed from 6.6 Gallons/Person/Day to 13.2 Gallons/Person/Day (Doubled)

# Stellar Apartments Test Case - Monthly Energy Use by Type

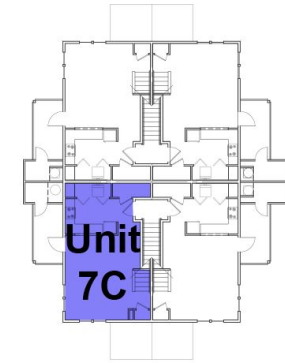


# Annual Energy Use by Apartment

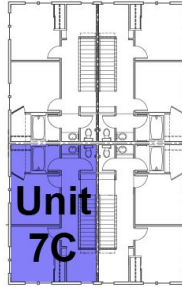


# Stellar Apartments - Best & Average Units

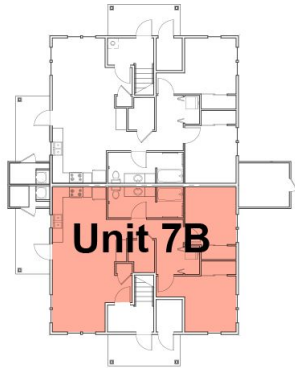
- Unit 7B - Worst Case Apartment
  - 3 Occupants Assumed
- Unit 7C - Average Apartment
  - 3 Occupants Assumed



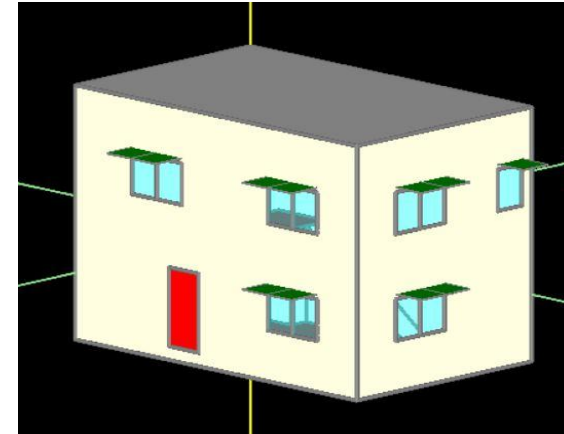
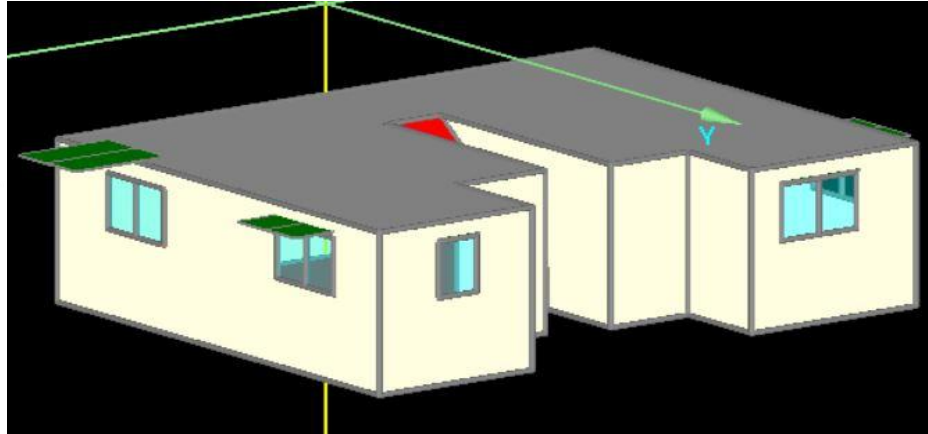
Second Floor



Third Floor

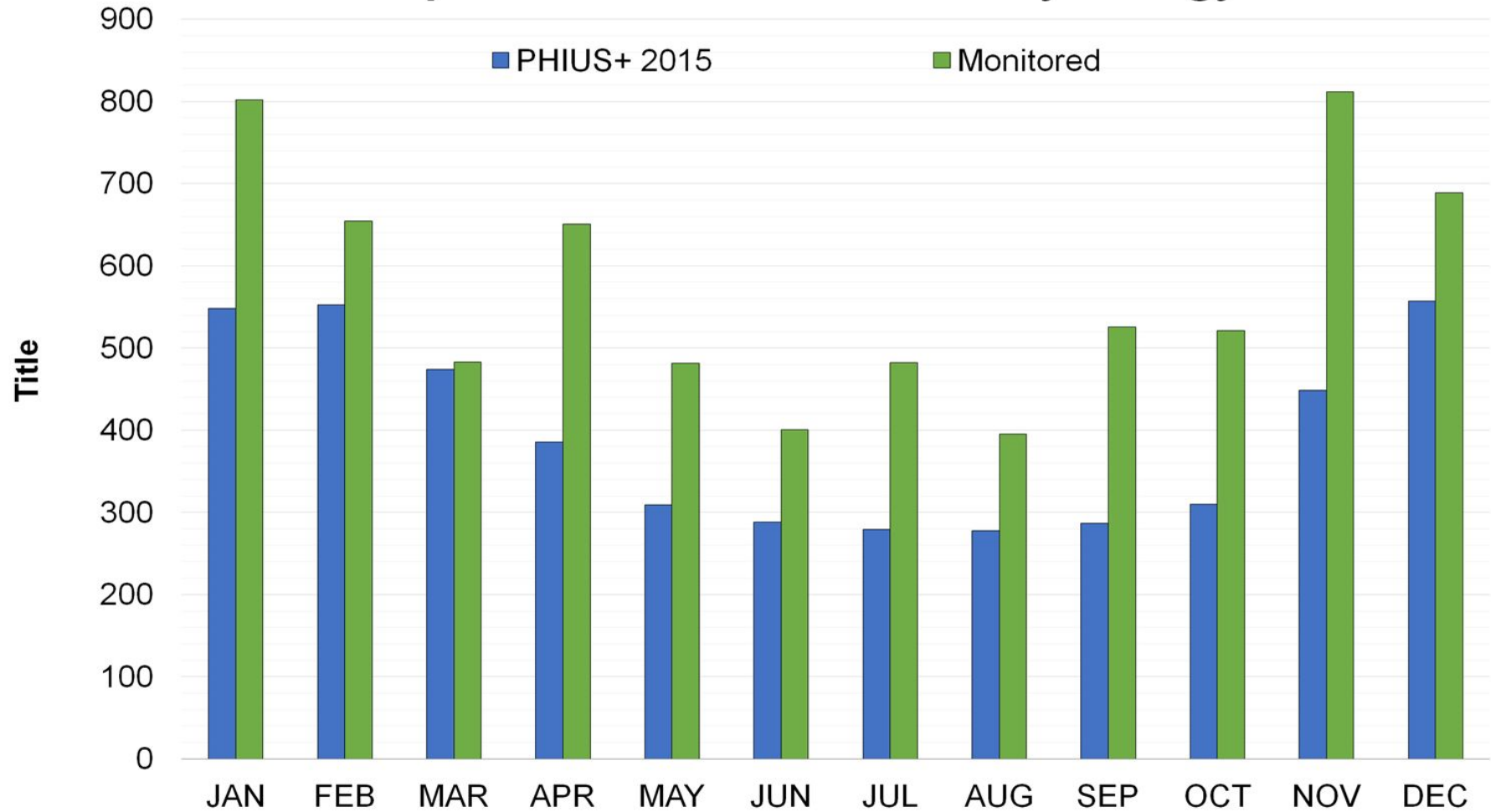


First Floor



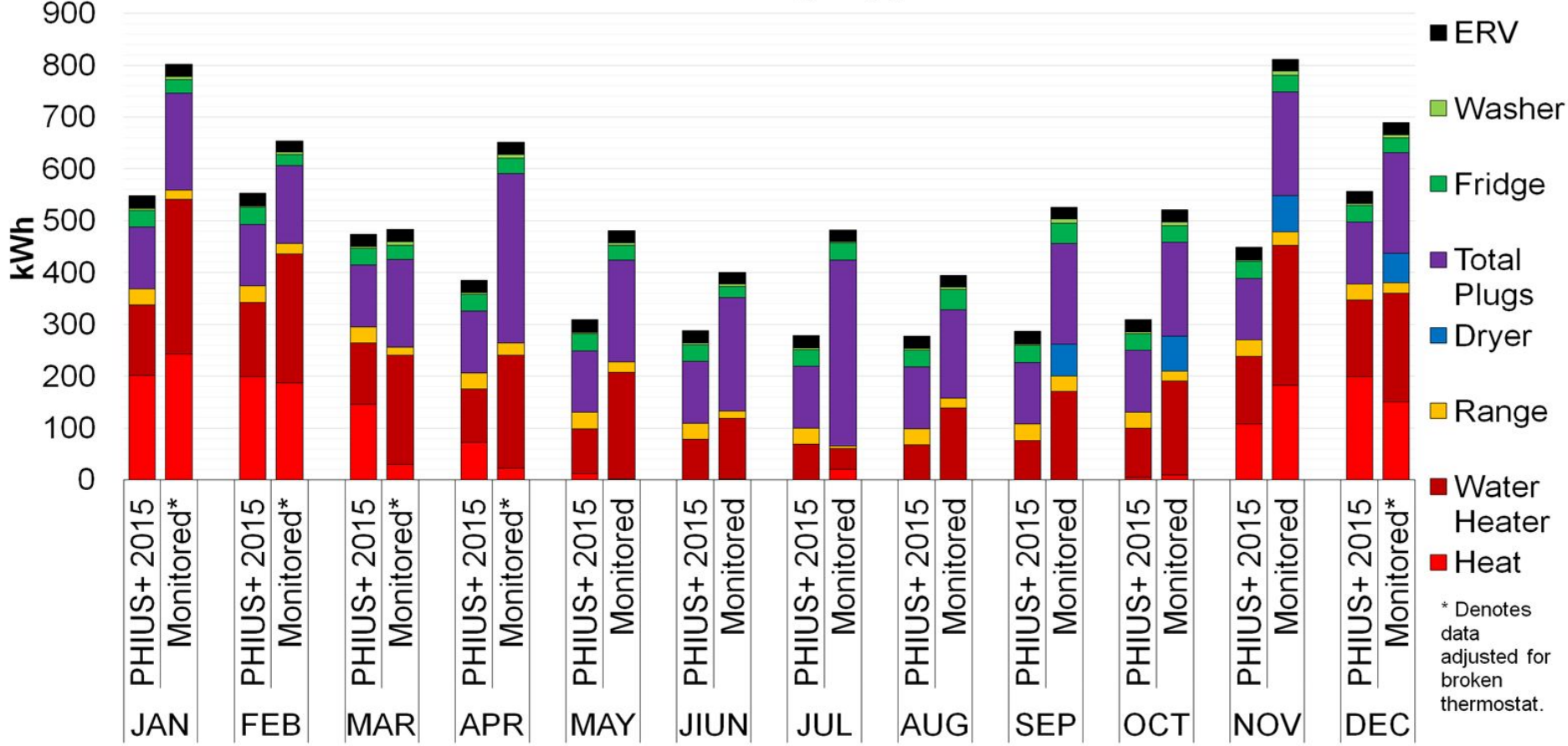
# Stellar Apartments Unit 7B - Monthly Energy Use

\*Worst Case



\*Worst Case

# Stellar Apartments Unit 7B - Monthly Energy Use by Type

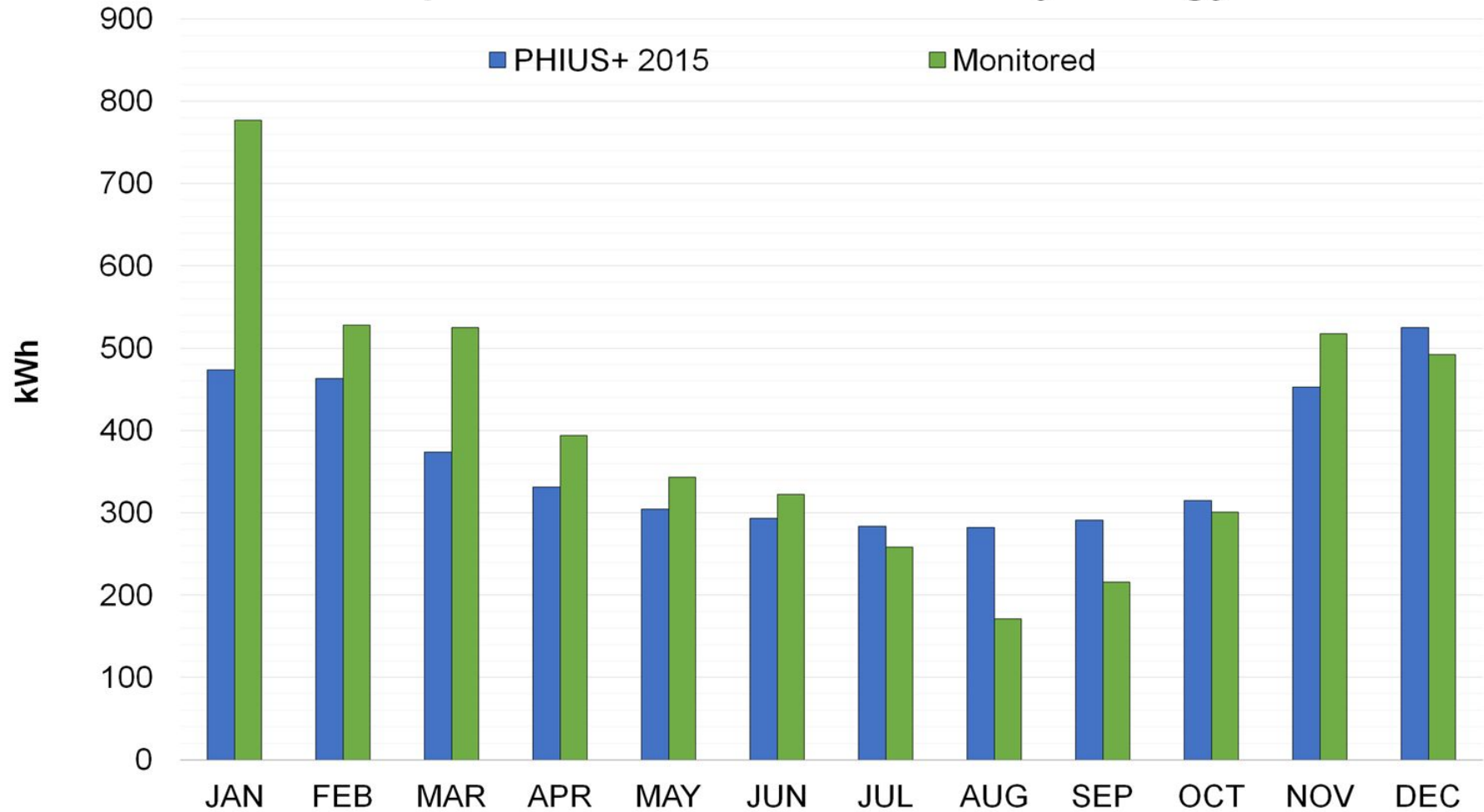


\* Denotes data adjusted for broken thermostat.



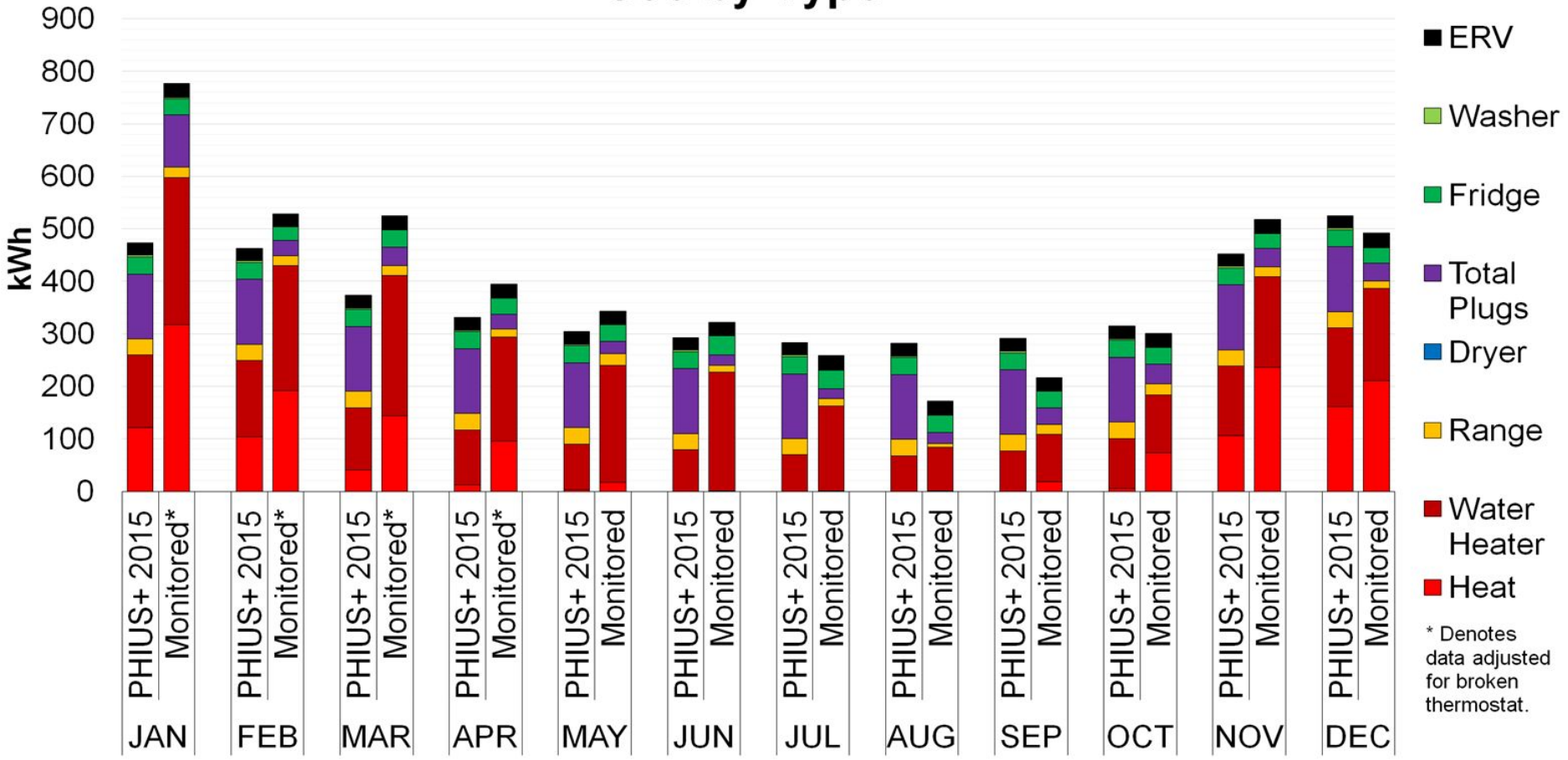
\*Average Case

# Stellar Apartments Unit 7C - Monthly Energy Use



\*Average Case

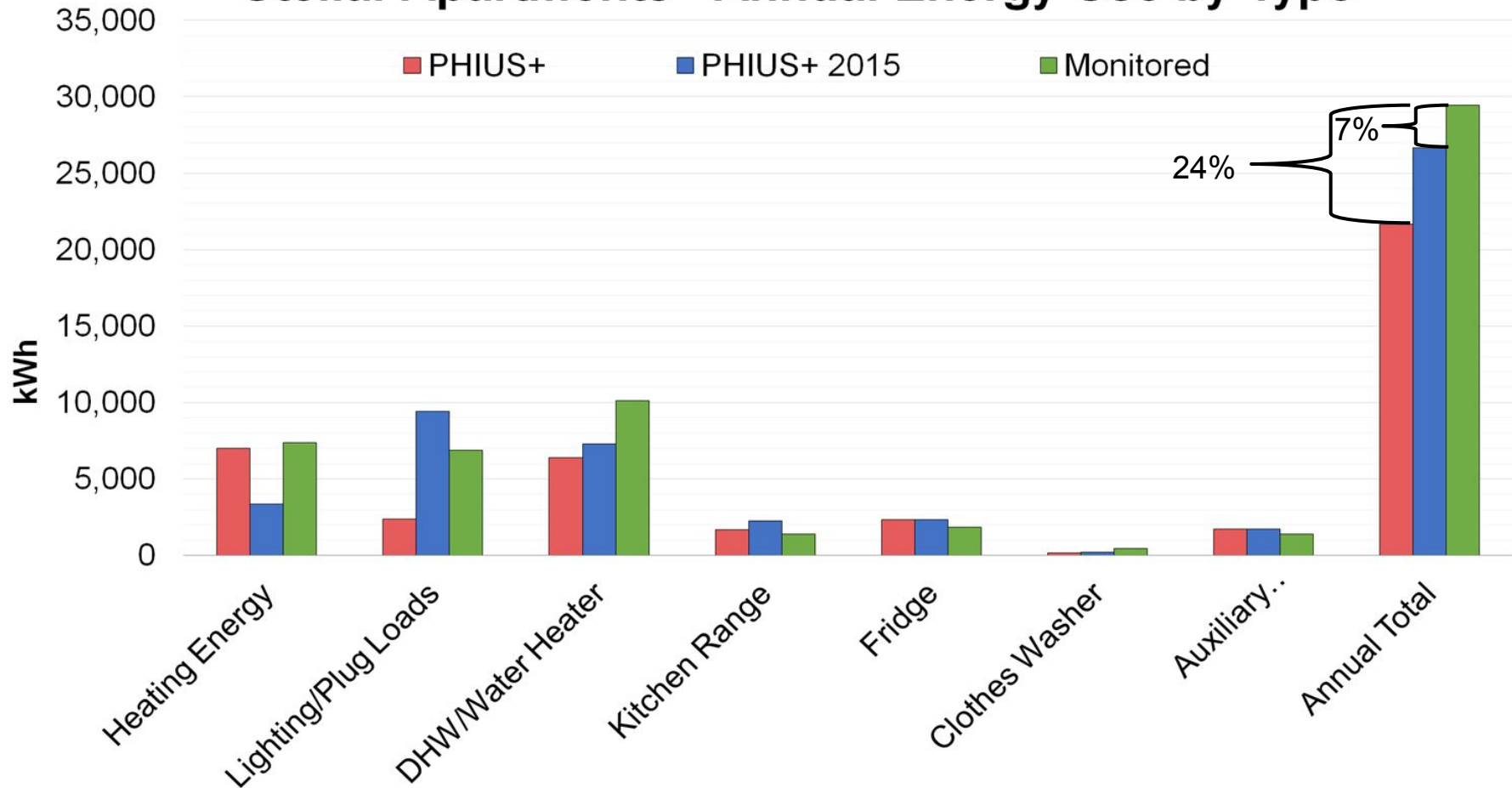
# Stellar Apartments Unit 7C - Monthly Energy Use by Type



# Stellar Apartments - Results Analysis

- **Annual Energy Use by Type**
- Discrepancies
  - Domestic Hot Water Use - Heat Pump Water Heaters
  - Lighting/Plug Loads
  - Space Heating
    - Broken Thermostat
    - July Heating
    - Actual Weather vs TMY3 Climate data

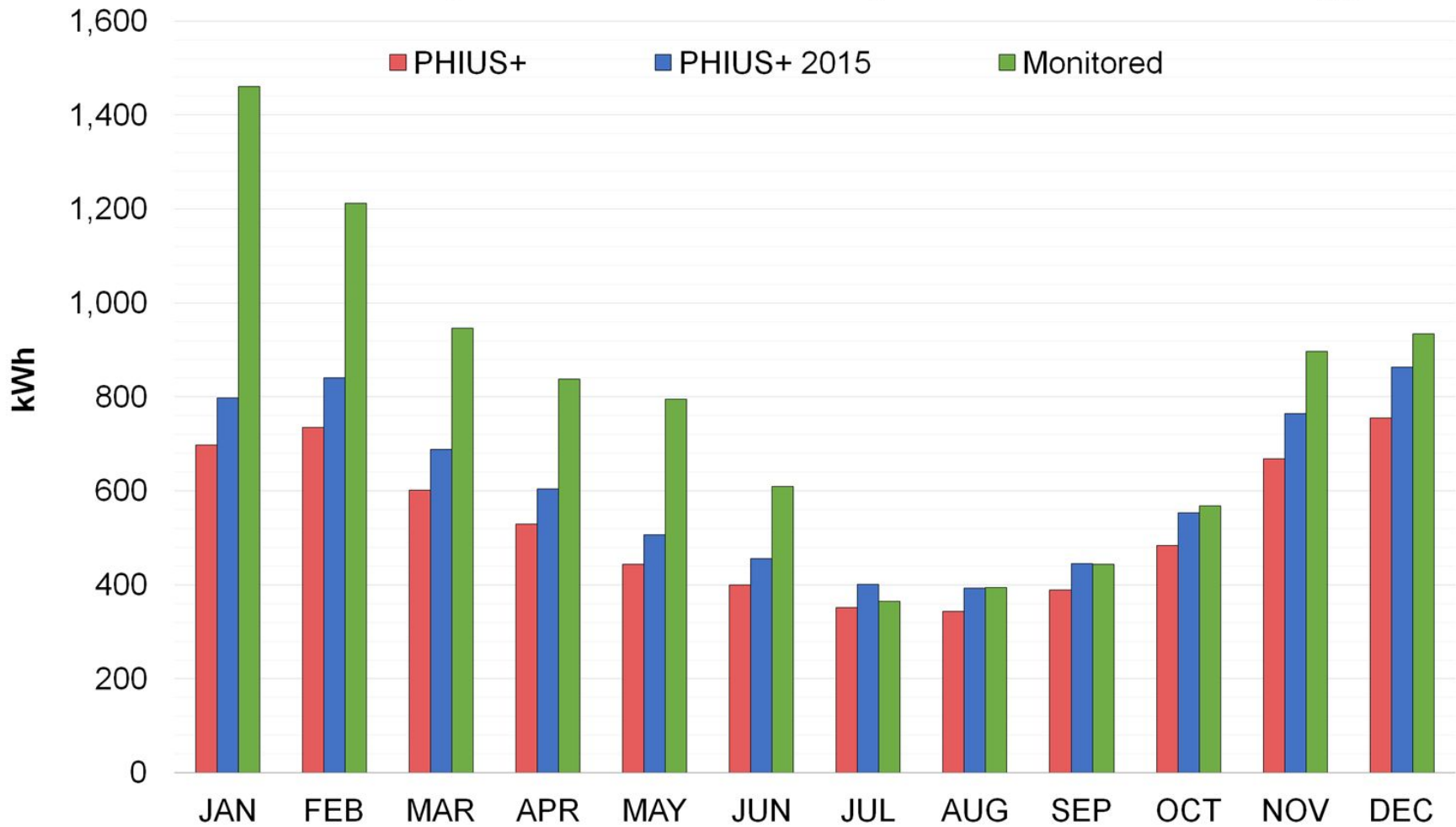
# Stellar Apartments - Annual Energy Use by Type



# Stellar Apartments - Results Analysis

- Annual Energy Use
- **Discrepancies**
  - **Domestic Hot Water Use - Heat Pump Water Heaters**
  - Lighting/Plug Loads
  - Space Heating
    - Broken Thermostat
    - July Heating
    - Actual Weather vs TMY3 Climate data

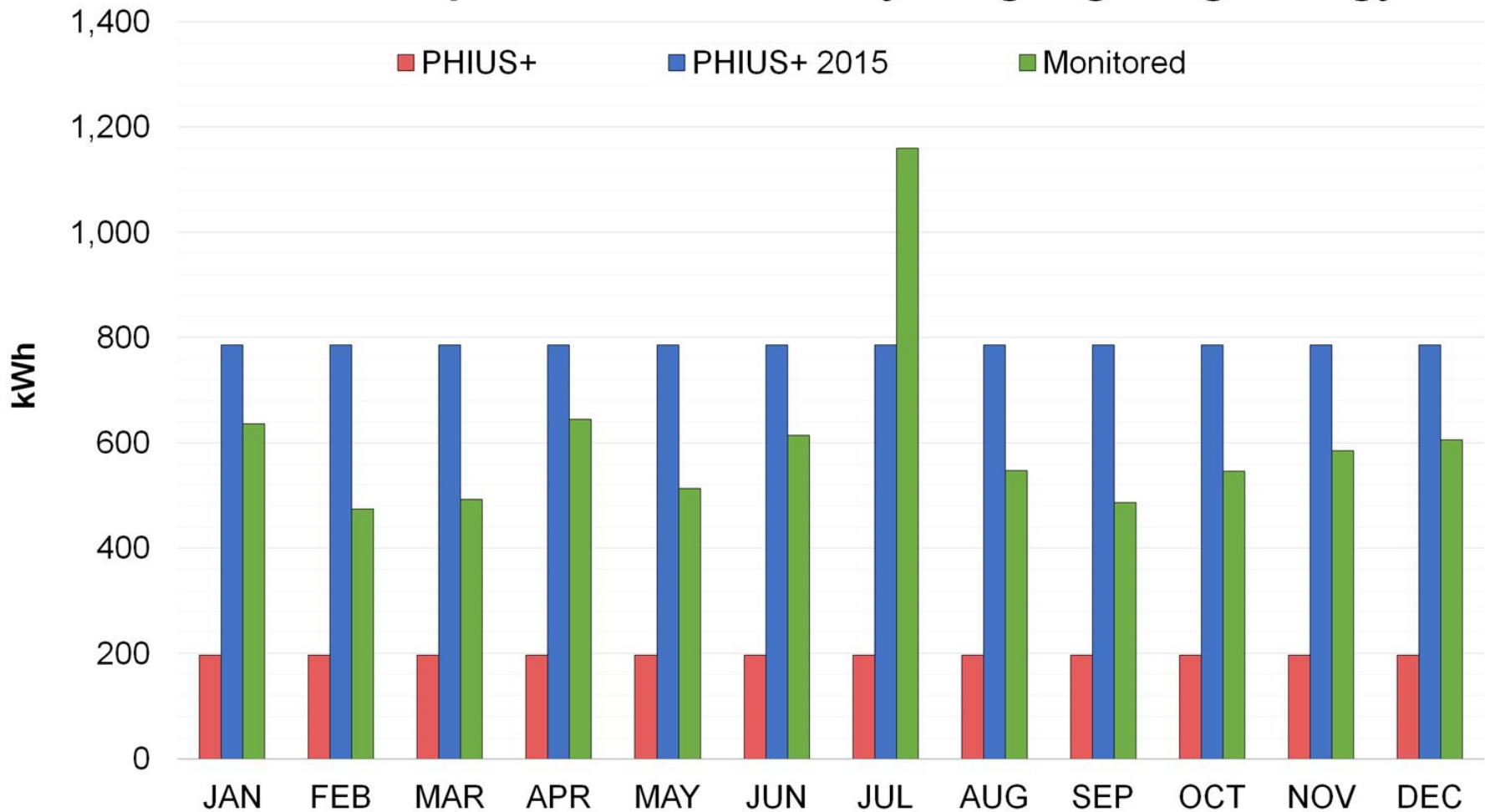
# Stellar Apartments - Monthly Water Heater Energy



# Stellar Apartments - Results Analysis

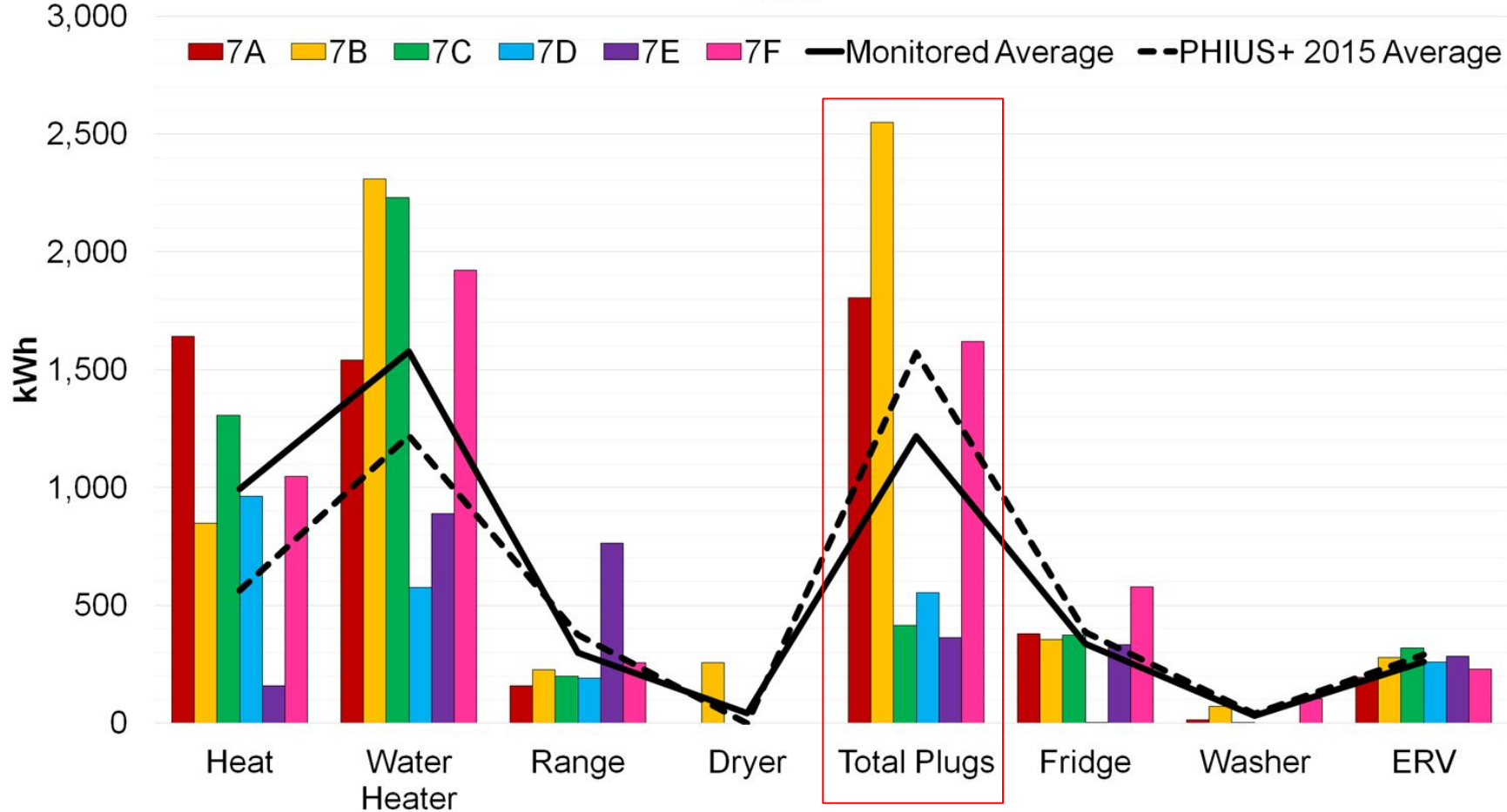
- Annual Energy Use
- **Discrepancies**
  - Domestic Hot Water Use - Heat Pump Water Heaters
  - **Lighting/Plug Loads**
  - Space Heating
    - Broken Thermostat
    - July Heating
    - Actual Weather vs TMY3 Climate data

# Stellar Apartments - Monthly Plug/Lighting Energy





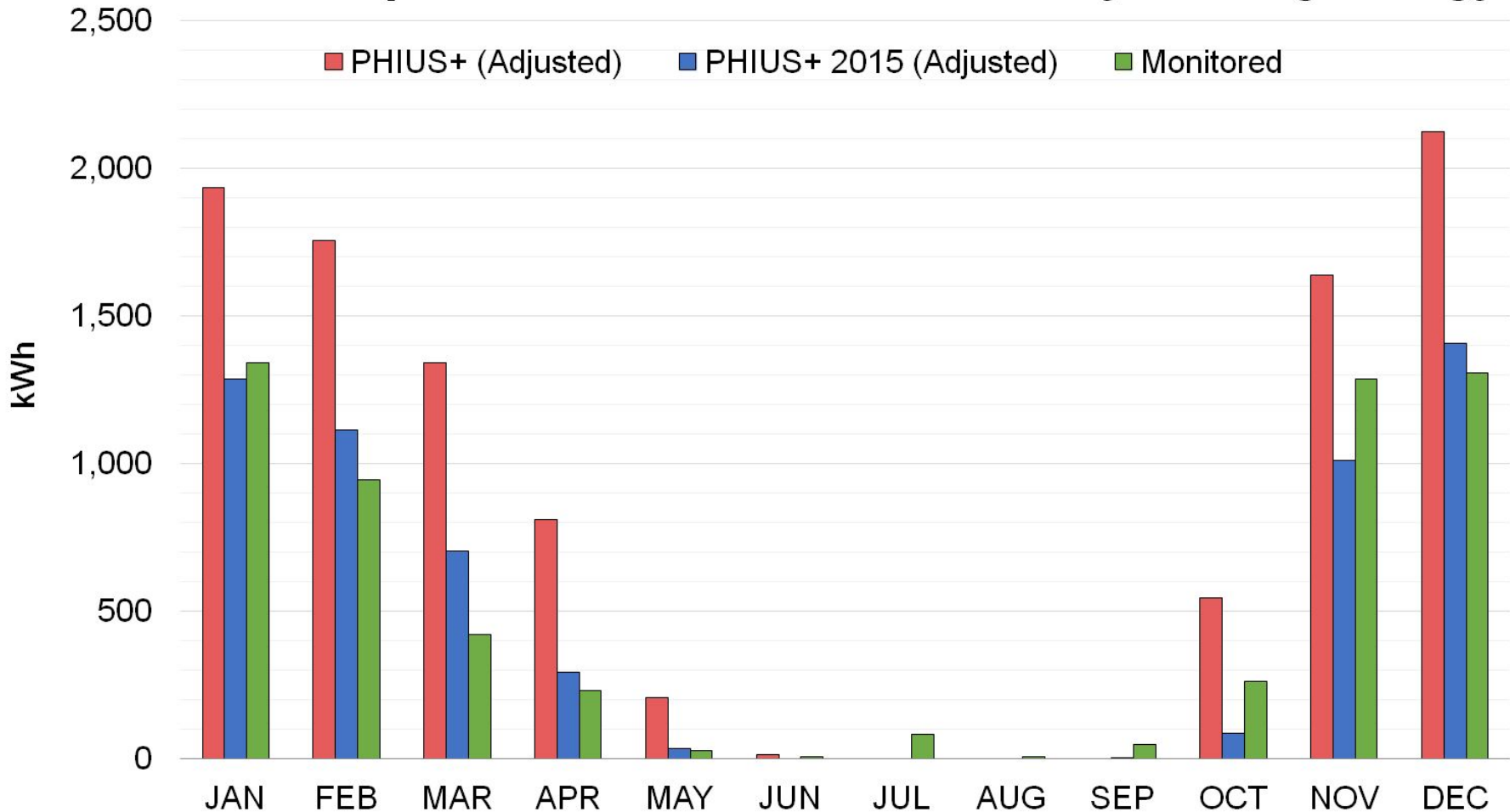
# Individual Apartment Energy Use vs Average Energy Use



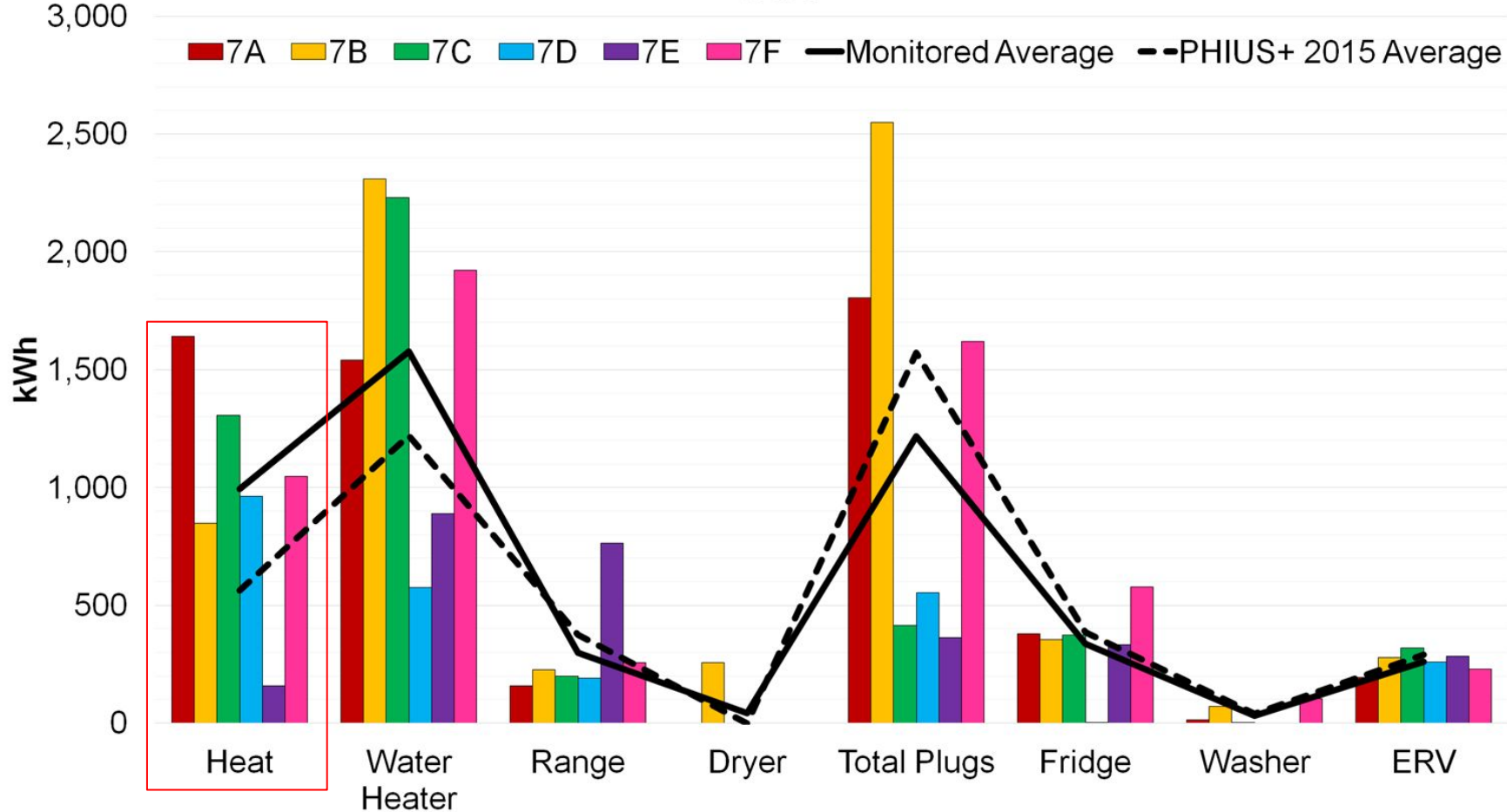
# Stellar Apartments - Results Analysis

- Annual Energy Use
- **Discrepancies**
  - Domestic Hot Water Use - Heat Pump Water Heaters
  - Lighting/Plug Loads
  - **Space Heating**
    - **Broken Thermostat**
    - **July Heating**
      - Actual Weather vs TMY3 Climate data

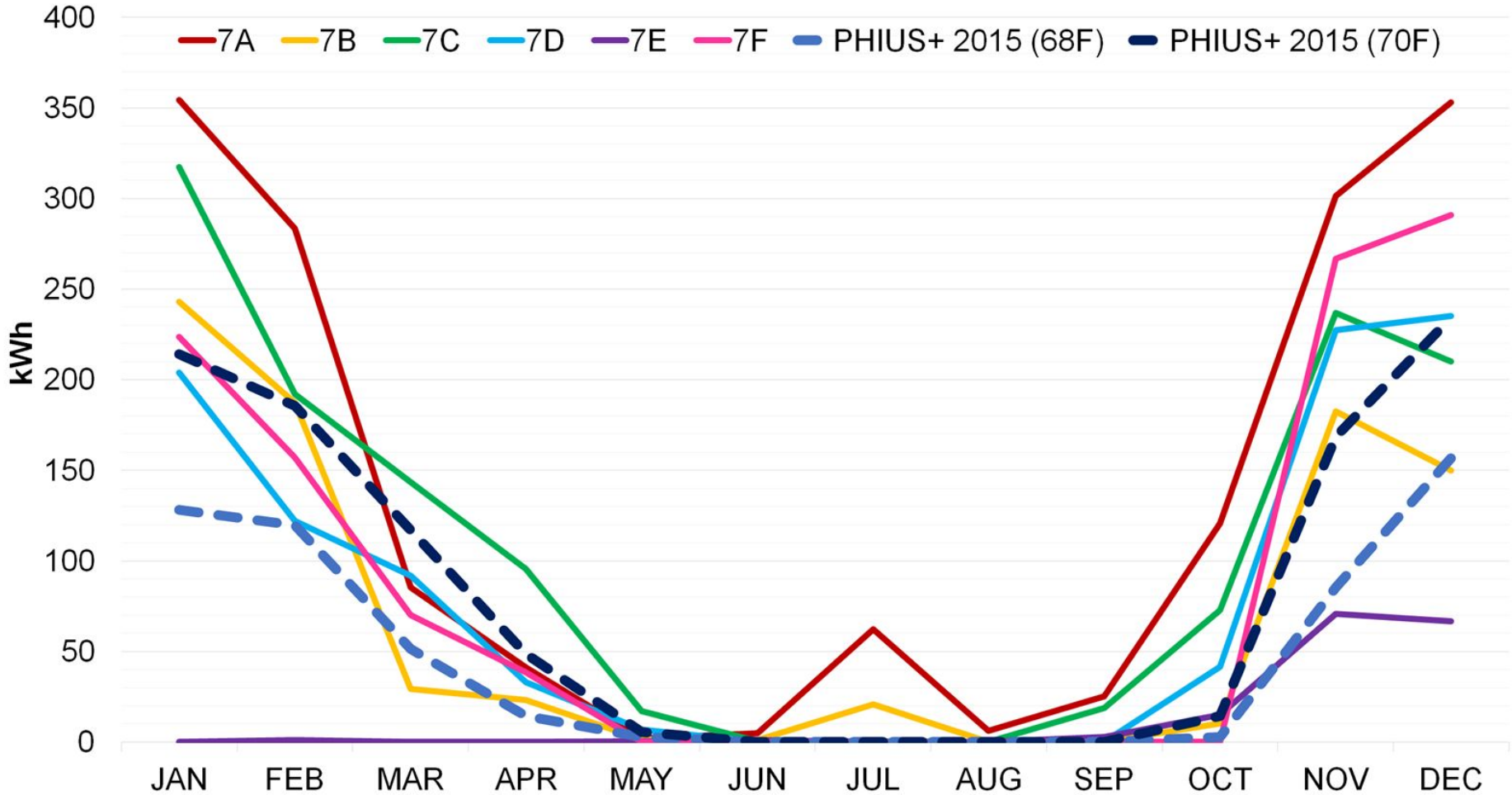
# Stellar Apartments - Test Case - Monthly Heating Energy



# Individual Apartment Energy Use vs Average Energy Use



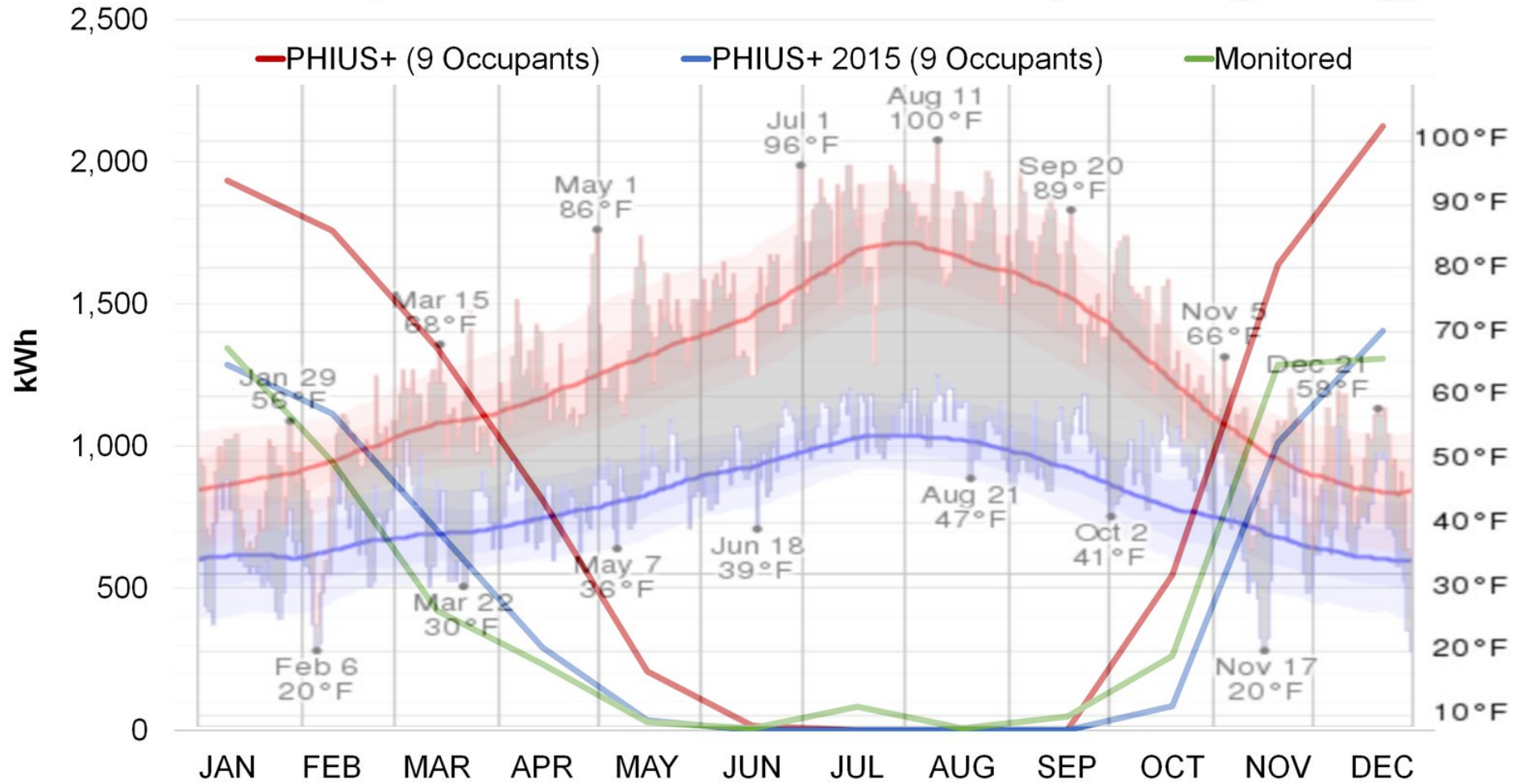
# Heating Energy Consumption by Apartment per Month



# Stellar Apartments - Results Analysis

- Annual Energy Use
- **Discrepancies**
  - Domestic Hot Water Use - Heat Pump Water Heaters
  - Lighting/Plug Loads
  - **Space Heating**
    - Broken Thermostat
    - July Heating
    - **Actual Weather vs TMY3 Climate data**

# Stellar Apartments - Test Case - Monthly Heating Energy



# Orchards at Orenco Phase 1





# Orchards at Orenco Phase 1

## Monitored Data

- 150 - Unit Multifamily Affordable Housing Development
- **One - 3-Story (57 units) built to PHIUS+ Standard**
- Monitoring Systems Installed
  - Track & Improve Tenant Energy Use Habits
- Data for November 2015 - March 2016

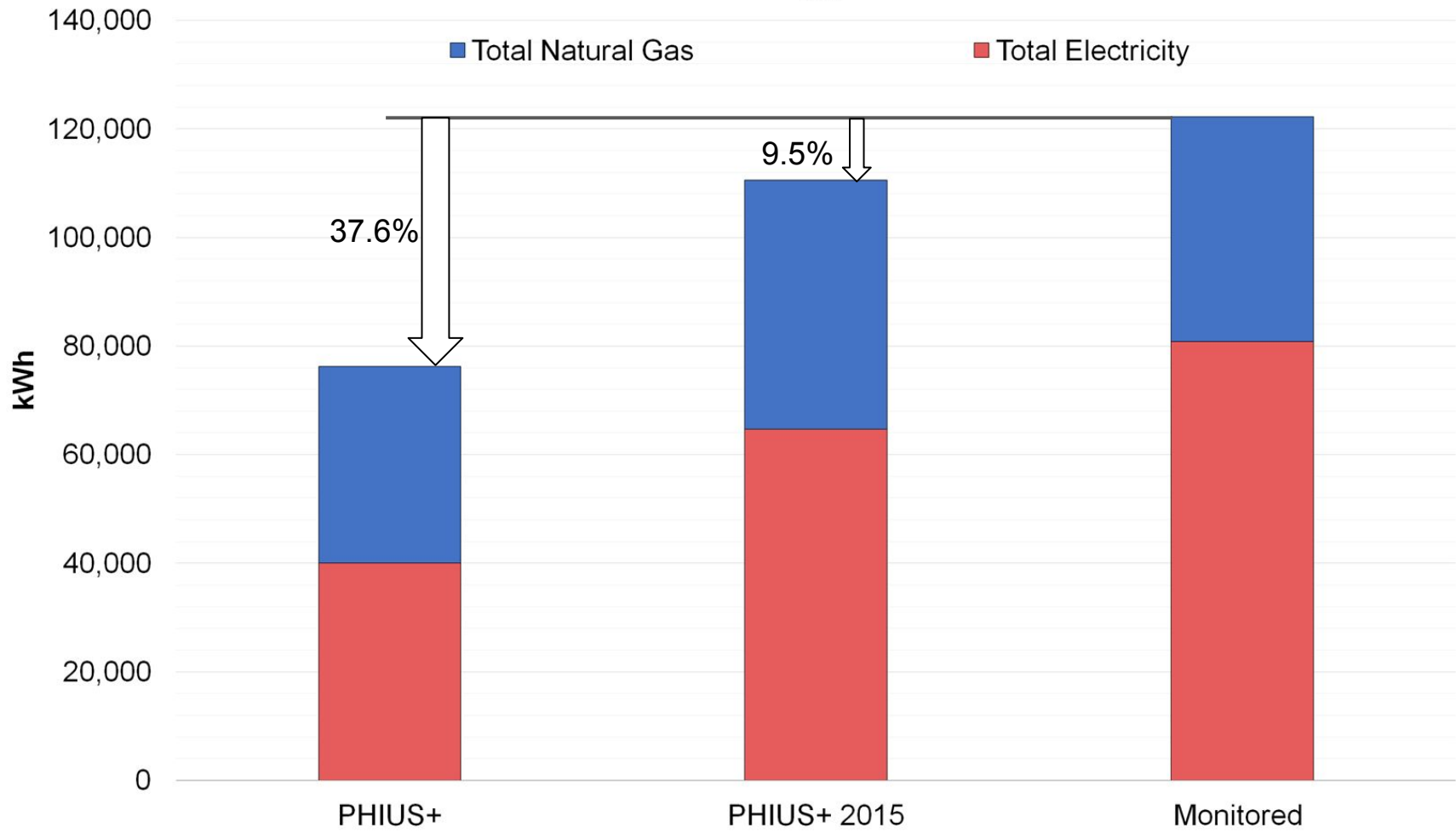
## Limitations

- Electricity Monitored (5 categories)
  - Per Unit
  - Strip Heating (8 of 57 units)
  - Common Space - Total per Month
  - Air Handlers + HRVs
  - Central Heat Pump
- Natural Gas
  - Gas Bill - Whole Building
  - Individual Hot Water Meter - Problem Prevented Separate Metering
  - 15% Natural Gas - Dryers (estimate)
  - 85% Natural Gas - Hot Water (estimate)

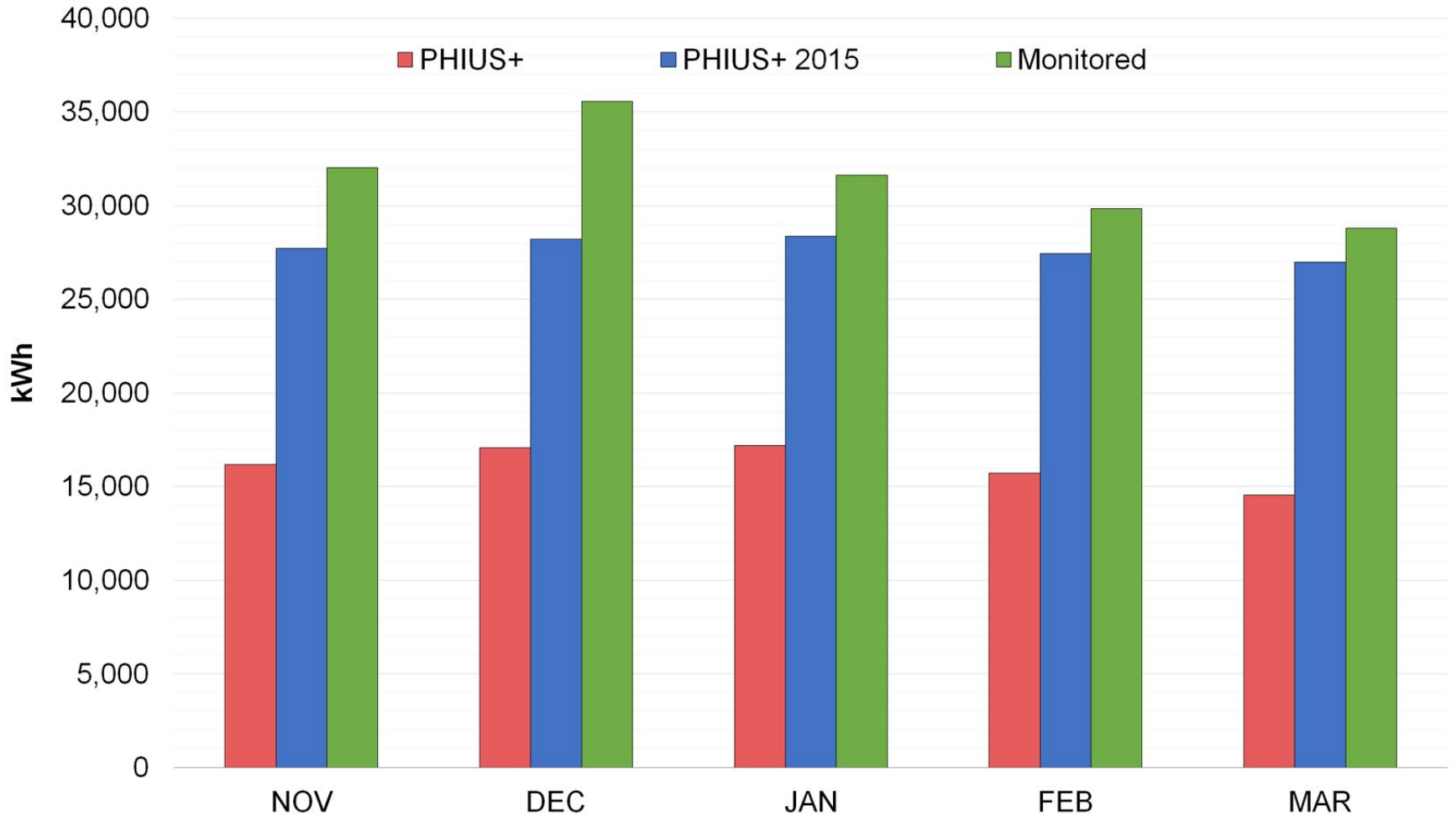
# Orchards at Orenco Phase 1 - Results Analysis

- **Whole Building Energy Use**
- Discrepancies
  - Lighting/Plug Loads
  - Common Space Energy Use
    - Exterior Stairwells
    - Distributed Antenna System (DAS)
    - Heating Energy
    - Unoccupied Units
- Hot Water Usage

# Total Energy Use



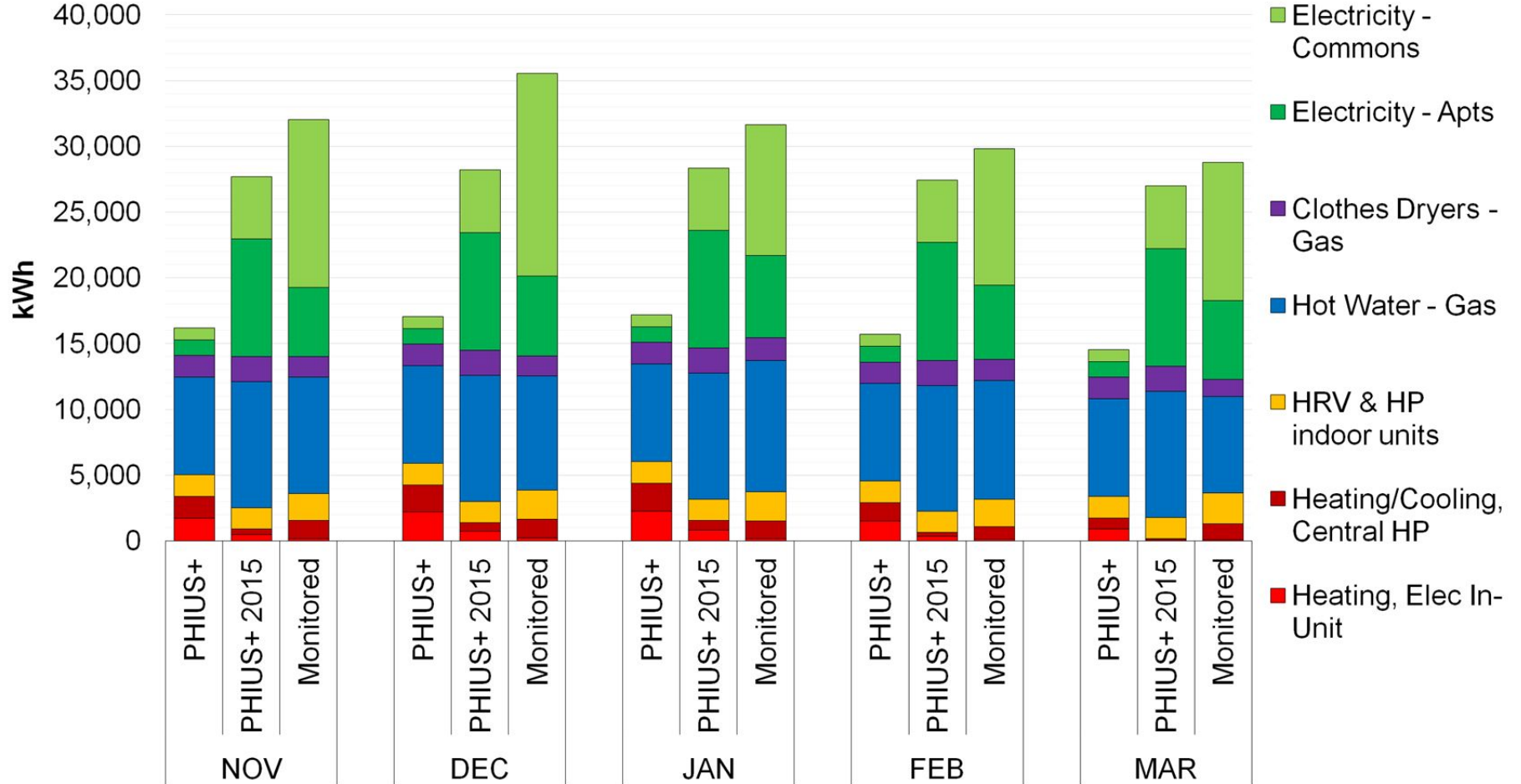
# Orchards at Orenco Phase 1- Monthly Energy Use



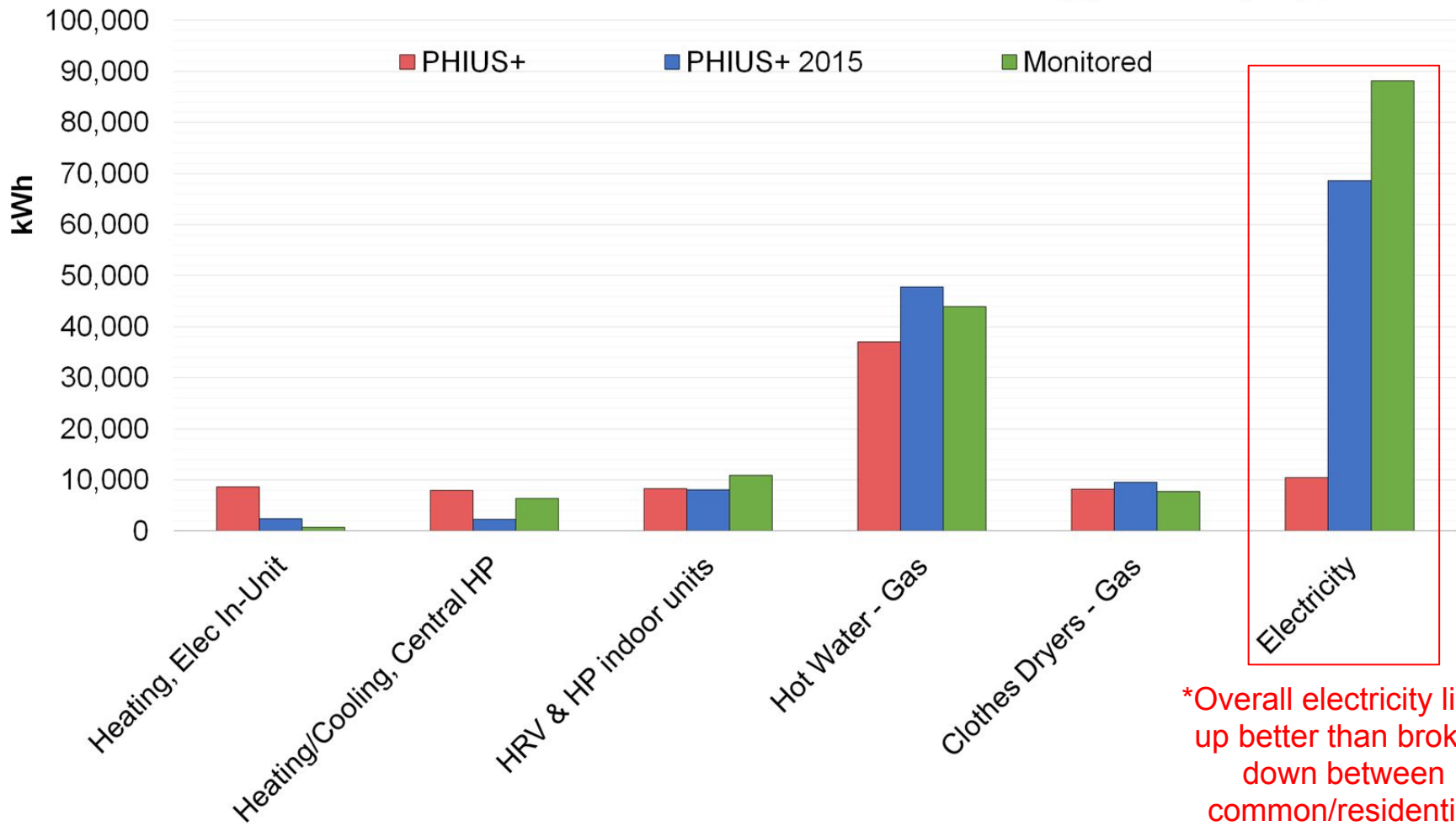
# Orchards at Orenco Phase 1 - Results Analysis

- Annual Energy Use
- **Discrepancies**
  - **Lighting/Plug Loads**
  - **Common Space Energy Use**
    - Exterior Stairwells
    - **Distributed Antenna System (DAS)**
    - Heating Energy
    - Unoccupied Units
- Hot Water Usage

# Orchards at Orenco Phase 1 - Monthly



# Orchards at Orenco Phase 1 - 5 Month Energy Use by Type

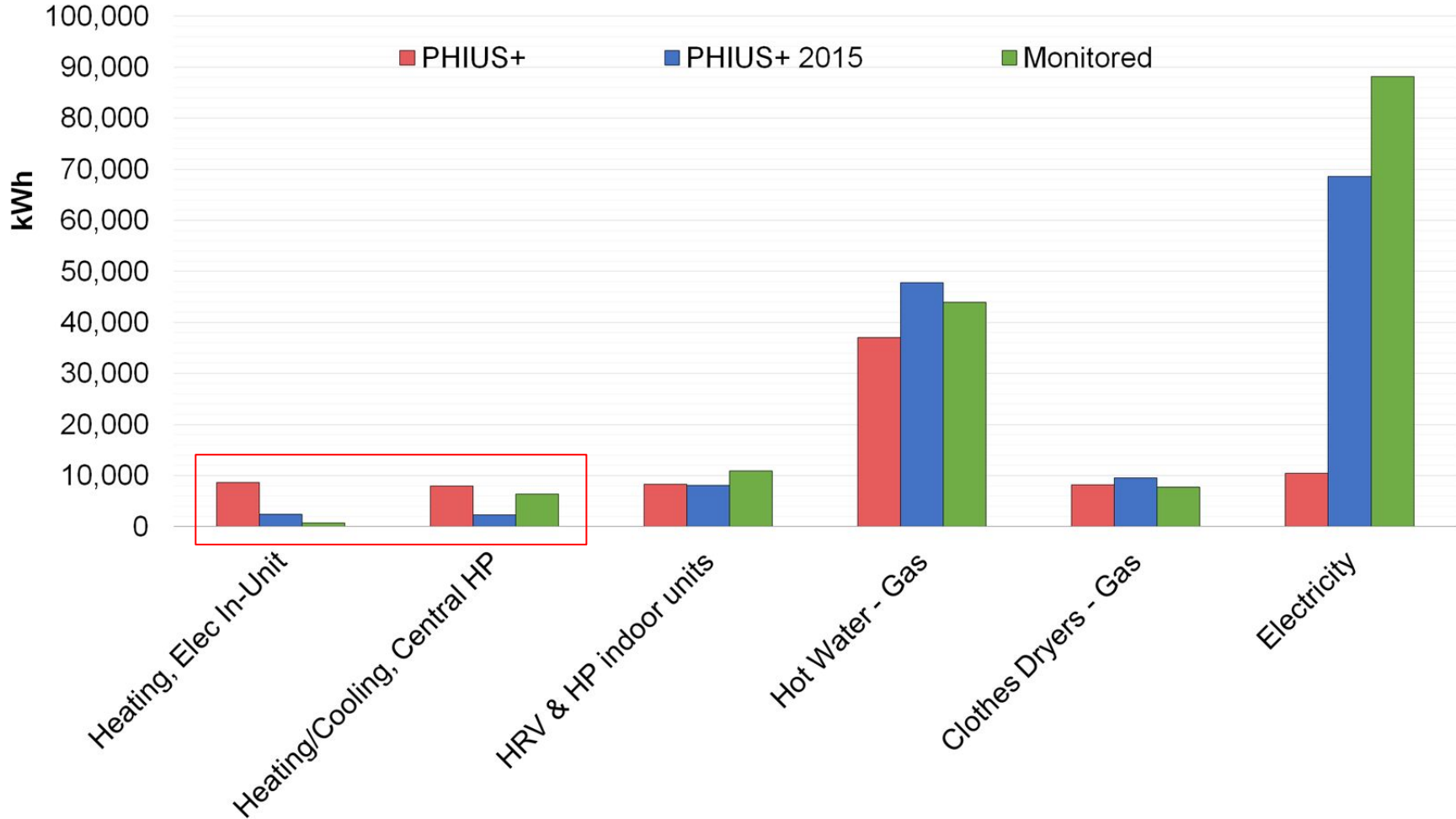


# Orchards at Orenco Phase 1 - Results Analysis

- Annual Energy Use
- **Discrepancies**
  - Lighting/Plug Loads
  - **Common Space Energy Use**
    - **Exterior Stairwells (40F to 68F)**
      - Distributed Antenna System (DAS)
    - **Heating Energy**
      - Unoccupied Units
- Hot Water Usage



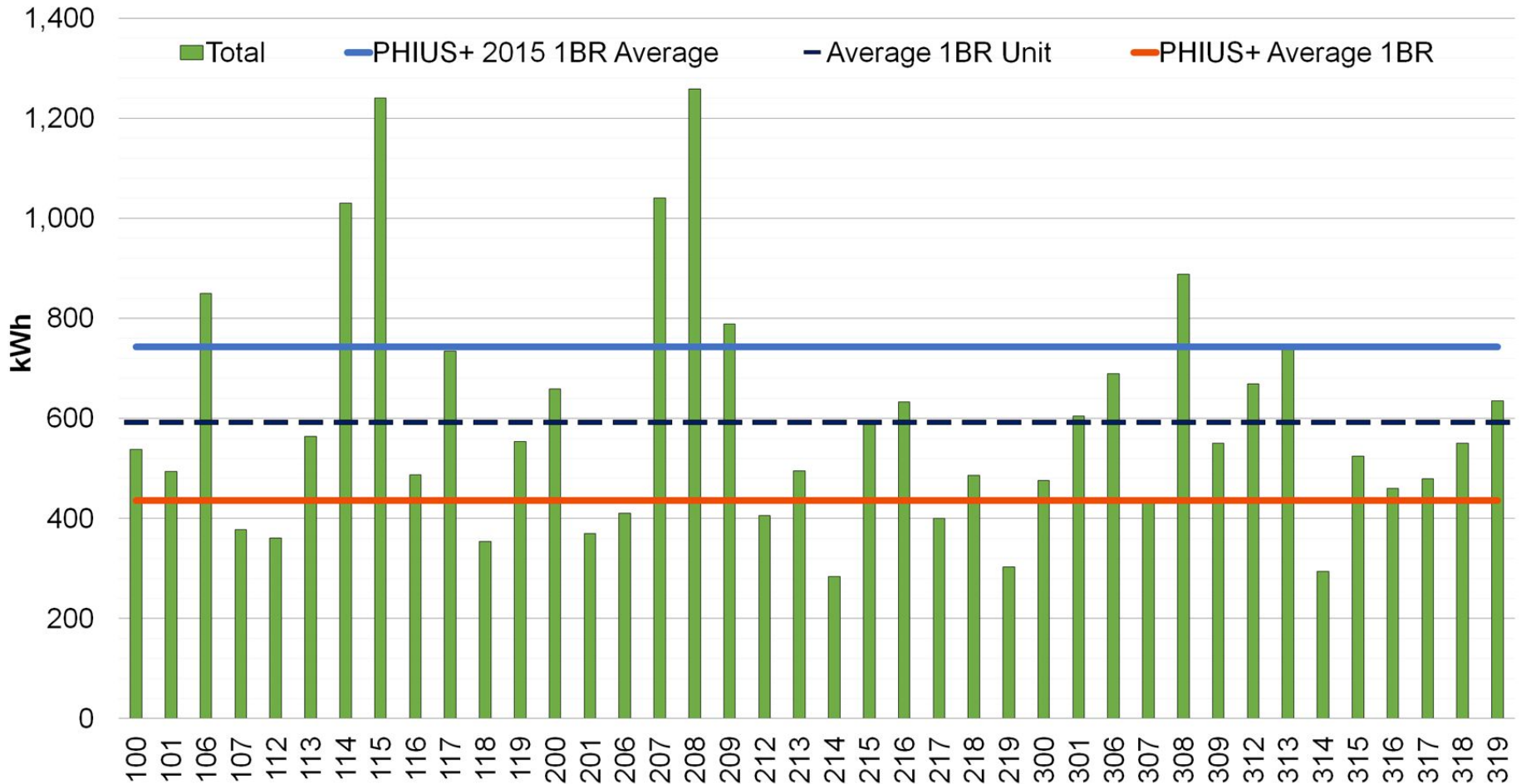
# Orchards at Orenco Phase 1 - 5 Month Energy Use by Type



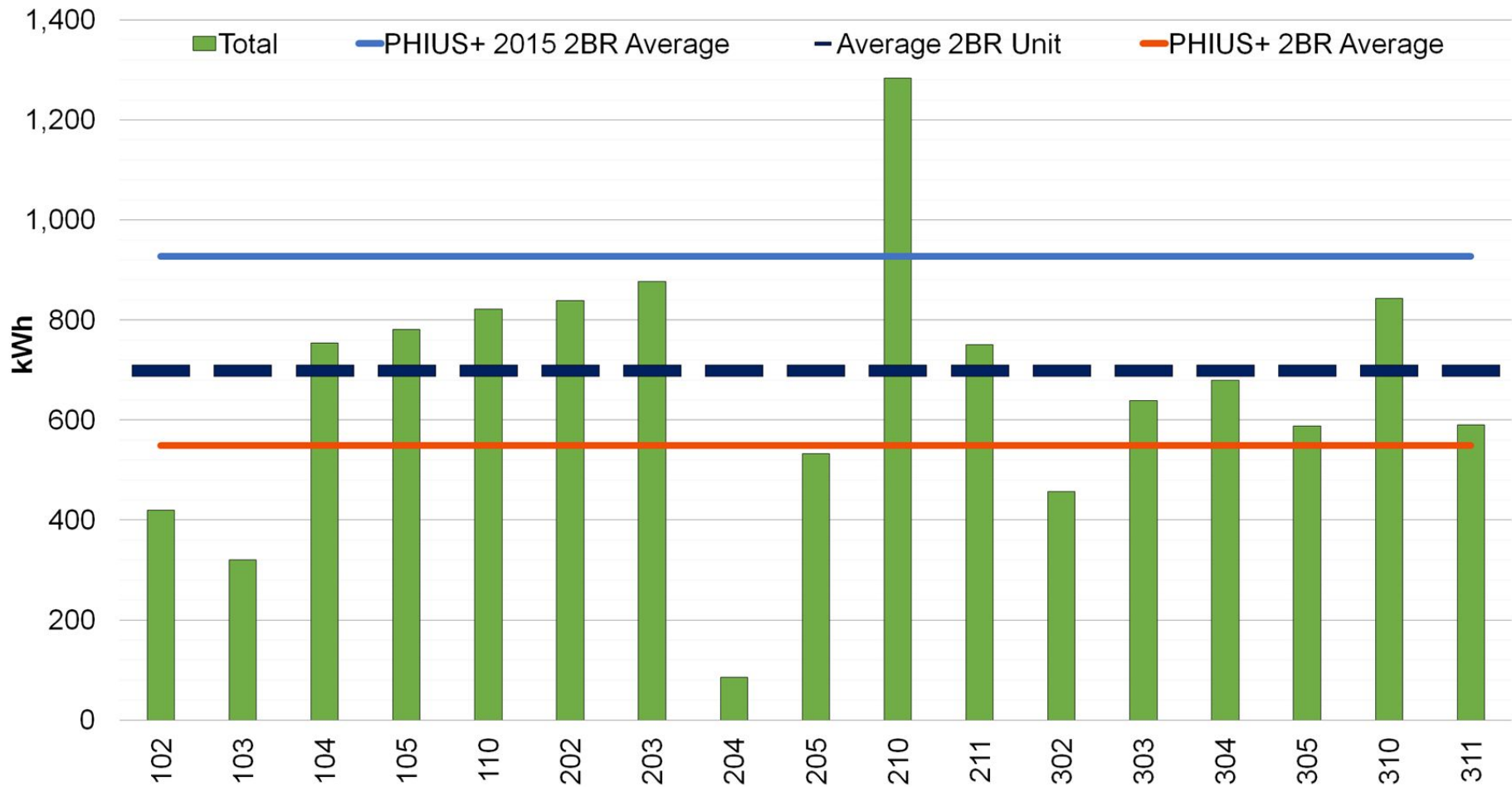
# Orchards at Orenco Phase 1 - Results Analysis

- Annual Energy Use
- **Discrepancies**
  - Lighting/Plug Loads
  - **Common Space Energy Use**
    - Exterior Stairwells
    - Distributed Antenna System (DAS)
    - Heating Energy
    - **Unoccupied Units**
- Hot Water Usage

# Orchards at Orenco Phase 1 - Electricity Use of 1-Bedroom Apartments



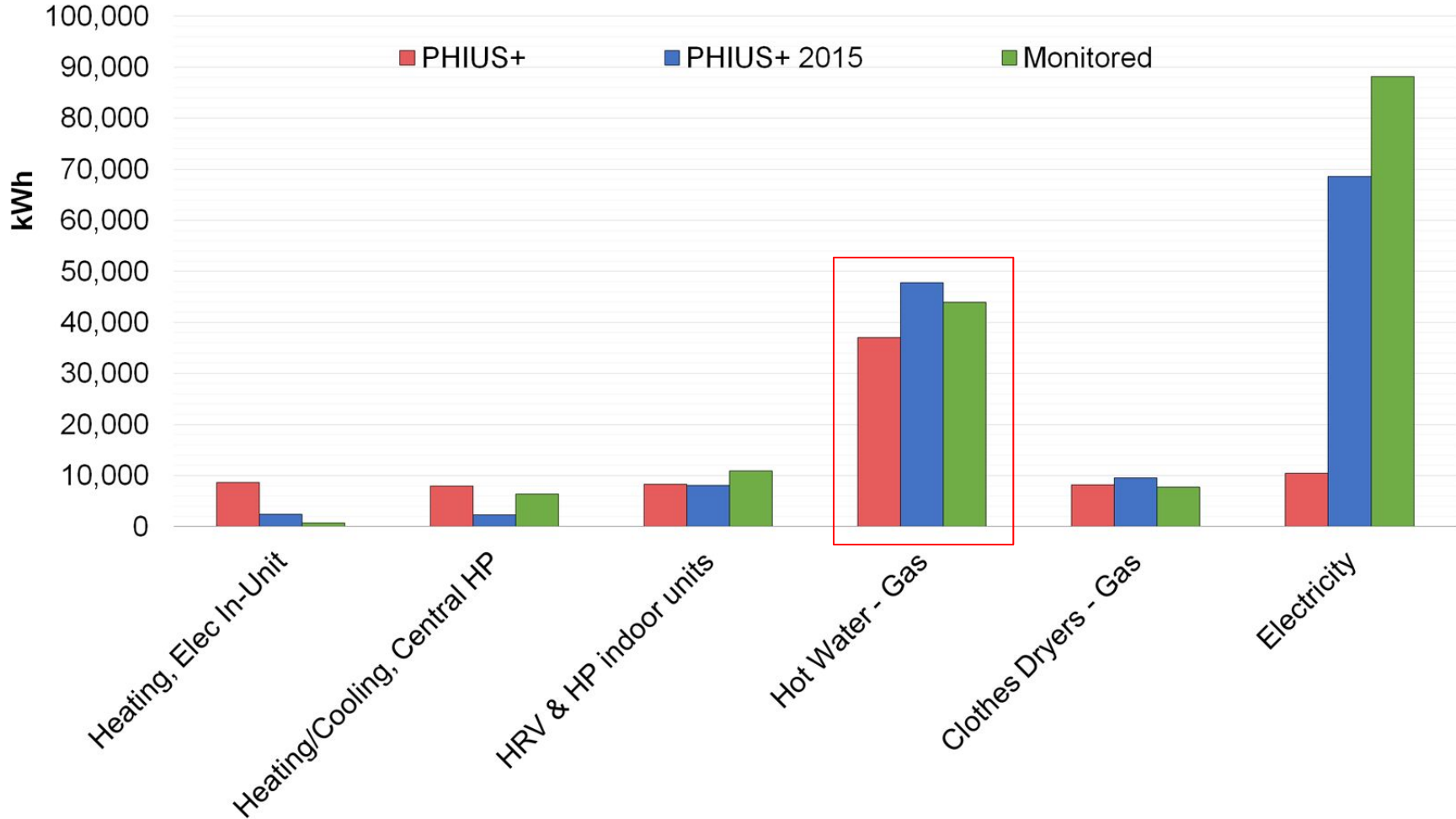
# Orchards at Orenco Phase 1 - Electricity Use of 1-Bedroom Apartments



# Orchards at Orenco Phase 1 - Results Analysis

- Annual Energy Use
- Discrepancies
  - Lighting/Plug Loads
  - Common Space Energy Use
    - Exterior Stairwells
    - Distributed Antenna System (DAS)
    - Heating Energy
    - Unoccupied Units
- **Hot Water Usage**

# Orchards at Orenco Phase 1 - 5 Month Energy Use by Type



# Knickerbocker Commons



# Knickerbocker Commons

## Monitored Data

- One - 6-Story (24 units) built to PHIUS+ Standard
- Common Electricity (single value)  
Includes:
  - Common Space Lighting
  - Common Space Miscellaneous Plug Loads
  - Elevator
  - Common Auxiliary Energy
  - Common Space ERVs
  - Clothes Washers

## Limitations

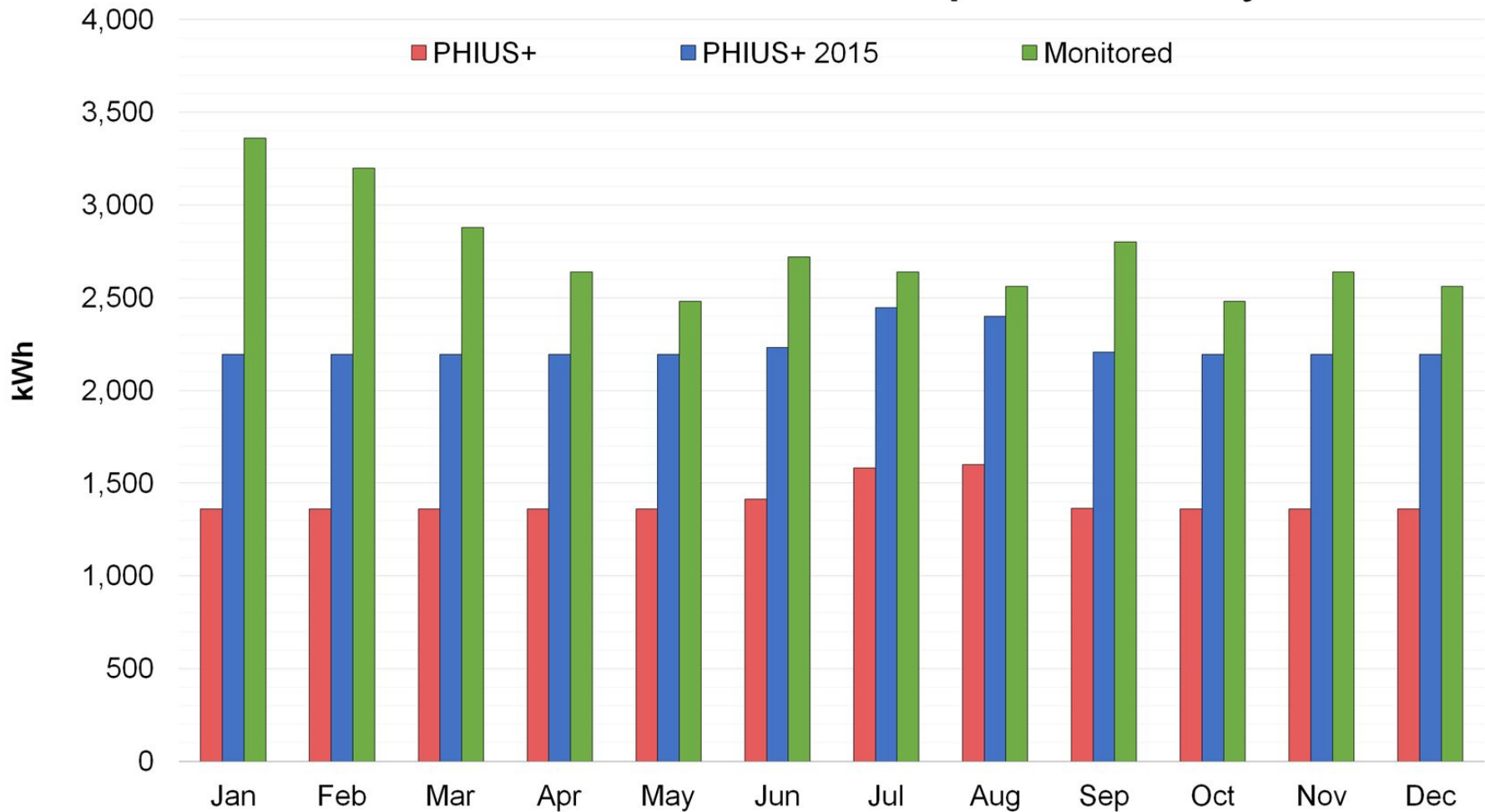
- PHIUS+ 2015 Electricity
  - Default Lighting Power Density (LPD)
- Unit Electricity not Provided
  - No Data Provided, Yet
  - Separately Metered - Future Analysis Possible
- Natural Gas
  - Dead Meter Battery - Incomplete Data
  - Not Included in Study



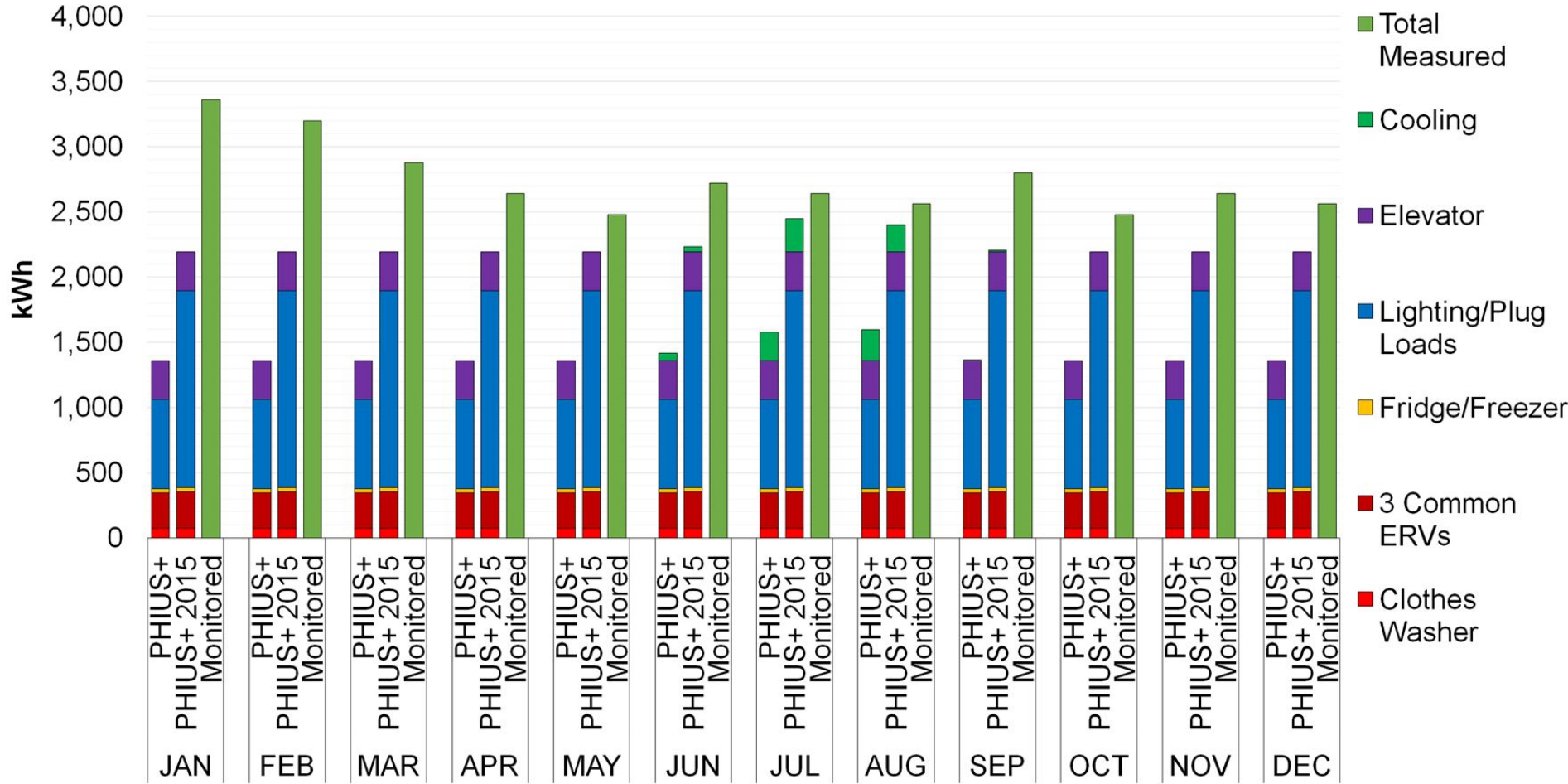
# Knickerbocker - Results Analysis

- Discrepancies
  - Common Space Electricity
    - Seasonal Lighting Increase
    - Spike in Winter Electricity usage

# Knickerbocker - Common Space Electricity



# Knickerbocker - Common Space Electricity Use by Type



# Conclusions

## Major Differences:

- Stellar Apartments
  - Hot Water Heating Energy
  - Heating Energy
- Orchards at Orenco Phase 1
  - Common Space Electricity
- Knickerbocker Commons
  - Lighting
  - MELS
- Monitored Energy Use by Type

**Monitored > Modeled**

Note: PHIUS Technical Committee - Draft Monitoring Data Protocol

Contact [certification@passivehouse.us](mailto:certification@passivehouse.us) if interested.

# Thanks!

## Questions?



## References

NetZED Case Study Laboratory. (2016) The Stellar Apartments Story. Eugene, OR: NetZED Case Study Laboratory.

PHIUS (2016, July 27). *PHIUS+ Certification GuideBook Version 1.03*.

[http://www.phius.org/PHIUSplusdocs/PHIUS+CertificationGuidebook\\_v1.03.pdf](http://www.phius.org/PHIUSplusdocs/PHIUS+CertificationGuidebook_v1.03.pdf)

PHIUS (2016). *Multifamily Resource Center*.

<http://multifamily.phius.org/service-group/multifamily-passive-building-projects>